

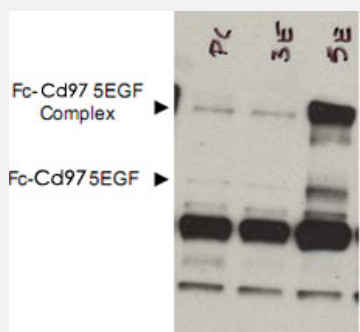
Cd97 polyclonal antibody

Catalog # PAB10186 Size 500 ug

Applications

Western Blot (Transfected lysate)

Western blot using Cd97 polyclonal antibody (Cat # PAB10186) shows detection of bands corresponding to free Fc-Cd97- (5EGF) (lower arrowhead) and Fc-Cd97- (5EGF) present as a complex (upper arrowhead) in lysates from COS cells.



The left lane contains lysate from cells transfected with control DNA. The right lane contains lysate from COS cells expressing Fc-Cd97- (5EGF). No staining was noted from bone marrow lysates taken from Cd97 knockout mice.

The identity of the band at ~65 KDa appearing in all lanes is not known. The formation of the Cd97 complex is currently under investigation.

Approximately 10 uL of lysate was used in each lane.

A 1:1,000 dilution of the primary antibody was used.

The image was processed using a 10-sec exposure.

Personal Communication. Yvona Ward. NIH, NCI, CCR, Bethesda, MD.

Specification

Product Description	Rabbit polyclonal antibody raised against partial recombinant Cd97.
Immunogen	Recombinant protein corresponding to amino acids 1-512 of mouse Cd97.
Host	Rabbit
Reactivity	Mouse, Rat
Form	Lyophilized
Quality Control Testing	Antibody Reactive Against Recombinant Protein.

Recommend Usage	Western Blot (1:1000-1:5000) Immunofluorescence (1:1000-1:5000) The optimal working dilution should be determined by the end user.
Storage Buffer	Lyophilized from 20 mM potassium phosphate buffer, 150 mM NaCl, pH 7.2 (0.01% sodium azide)
Storage Instruction	Store at 4°C. For long term storage store at -20°C. Aliquot after reconstitution to avoid repeated freezing and thawing.
Note	This product contains sodium azide: a POISONOUS AND HAZARDOUS SUBSTANCE which should be handled by trained staff only.

Applications

- Western Blot (Transfected lysate)

Western blot using Cd97 polyclonal antibody (Cat # PAB10186) shows detection of bands corresponding to free Fc-Cd97- (5EGF) (lower arrowhead) and Fc-Cd97- (5EGF) present as a complex (upper arrowhead) in lysates from COS cells.

The left lane contains lysate from cells transfected with control DNA.

The right lane contains lysate from COS cells expressing Fc-Cd97- (5EGF).

No staining was noted from bone marrow lysates taken from Cd97 knockout mice.

The identity of the band at ~65 KDa appearing in all lanes is not known.

The formation of the Cd97 complex is currently under investigation.

Approximately 10 uL of lysate was used in each lane.

A 1:1,000 dilution of the primary antibody was used.

The image was processed using a 10-sec exposure.

Personal Communication. Yvona Ward. NIH, NCI, CCR, Bethesda, MD.

- Immunofluorescence

- Enzyme-linked Immunoabsorbent Assay

Gene Info — Cd97

Entrez GeneID	26364
Protein Accession#	NP_036055:Q9Z0M6
Gene Name	Cd97
Gene Alias	AA409984, TM7LN1
Gene Description	CD97 antigen
Gene Ontology	Hyperlink

Publication Reference

- [CD97, an adhesion receptor on inflammatory cells, stimulates angiogenesis through binding integrin counterreceptors on endothelial cells.](#)

Wang T, Ward Y, Tian L, Lake R, Guedez L, Stetler-Stevenson WG, Kelly K.

Blood 2005 Apr; 105(7):2836.

- [Proteolytic cleavage of the EMR2 receptor requires both the extracellular stalk and the GPS motif.](#)

Chang GW, Stacey M, Kwakkenbos MJ, Hamann J, Gordon S, Lin HH.

FEBS Letters 2003 Jul; 547(1-3):145.

Application: Flow Cyt, WB-Tr, Human, Mouse, CHO-K1, HEK 293T cells

- [CD97, but not its closely related EGF-TM7 family member EMR2, is expressed on gastric, pancreatic, and esophageal carcinomas.](#)

Aust G, Steinert M, Schutz A, Boltze C, Wahlbuhl M, Hamann J, Wobus M.

American Journal of Clinical Pathology 2002 Nov; 118(5):699.

Application: IHC-Fr, Human, Gastric, Pancreatic, Esophageal tissues