

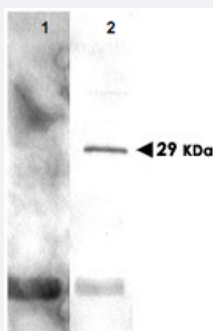
PCNA polyclonal antibody

Catalog # PAB10179 Size 100 ug

Applications

Western Blot (Recombinant protein)

Western blot using PCNA polyclonal antibody (Cat # PAB10179) shows detection of a predominant band at ~36 KDa corresponding to PCNA (arrowhead lane 2).



Peptide competition effectively eliminates specific band reactivity (Lane 1).

For peptide competition, the antibody was pre-incubated with 100 ug (excess) of the peptide for 2h at 37°C followed by overnight incubation at 4°C, followed by a brief centrifugation and then reaction with the membrane.

Each lane contains a lysate from 10⁵ cells from the marine dinoflagellate

Prorocentrum minimum.

Cells were separated by SDS-PAGE and transferred onto nitrocellulose using standard techniques.

After blocking the membrane was probed with the primary antibody diluted to 1:1000.

Incubation was followed by washes and reaction with HRP Gt-a-Rabbit IgG [H&L] MX.

Detection was by ECL using a 30 sec exposure time.

Personnel Communication. S. Lin, U.Conn.

Specification

Product Description	Rabbit polyclonal antibody raised against synthetic peptide of PCNA.
Immunogen	A synthetic peptide corresponding to amino acids 55-71 of <i>Isochrysis galbana</i> PCNA.
Host	Rabbit
Specificity	This antibody would react with PCNA from the following alga sources: <i>Prorocentrum minimum</i> , <i>Tetraselmis chui</i> , <i>Pleurochrysis carterae</i> and <i>Isochrysis galbana</i> . Expect partial reactivity with PCNA from other alga sources as well as carrot, tobacco, peas, soybean and rice based on partial protein sequence homology.

Form	Liquid
Quality Control Testing	Antibody Reactive Against Synthetic Peptide.
Recommend Usage	ELISA (1:10000-1:50000) Western Blot (1:200-1:2000) The optimal working dilution should be determined by the end user.
Storage Buffer	In 20 mM KH ₂ PO ₄ , 150 mM NaCl, pH 7.2 (0.01% sodium azide)
Storage Instruction	Store at 4°C. For long term storage store at -20°C. Aliquot to avoid repeated freezing and thawing.
Note	This product contains sodium azide: a POISONOUS AND HAZARDOUS SUBSTANCE which should be handled by trained staff only.

Applications

- Western Blot (Recombinant protein)

Western blot using PCNA polyclonal antibody (Cat # PAB10179) shows detection of a predominant band at ~36 kDa corresponding to PCNA (arrowhead lane 2).

Peptide competition effectively eliminates specific band reactivity (Lane 1).

For peptide competition, the antibody was pre-incubated with 100 µg (excess) of the peptide for 2h at 37°C followed by overnight incubation at 4°C, followed by a brief centrifugation and then reaction with the membrane.

Each lane contains a lysate from 10⁵ cells from the marine dinoflagellate *Prorocentrum minimum*.

Cells were separated by SDS-PAGE and transferred onto nitrocellulose using standard techniques.

After blocking the membrane was probed with the primary antibody diluted to 1:1000.

Incubation was followed by washes and reaction with HRP Gt-a-Rabbit IgG [H&L] MX.

Detection was by ECL using a 30 sec exposure time.

Personnel Communication. S. Lin, UConn.

- Immunoprecipitation

- Enzyme-linked Immunoabsorbent Assay

Publication Reference

- [Identification and preliminary characterization of PCNA gene in the marine phytoplankton *Dunaliella tertiolecta* and *Isochrysis galbana*.](#)

Lin S, Carpenter EJ.

Molecular Marine Biology and Biotechnology 1998 Mar; 7(1):62.

Application: IF, Plant, *Dunaliella tertiolecta*