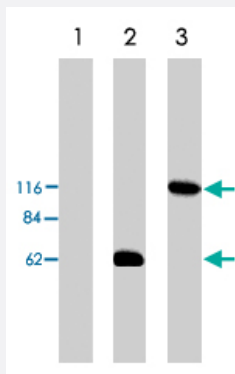


Arhgef2 polyclonal antibody

Catalog # PAB10113 Size 250 ug

Applications



Western Blot (Transfected lysate)

Western blot analysis using Arhgef2 polyclonal antibody (Cat # PAB10113) on HEK293 cell transfected with vector alone (lane 1), Arhgef2-short (lane 2) and Arhgef2-long (lane 3).

Specification

Product Description	Sheep polyclonal antibody raised against partial recombinant Arhgef2.
Immunogen	Recombinant GST fusion protein corresponding to amino acids 2-447 of Arhgef2.
Host	Sheep
Reactivity	Mouse
Form	Liquid
Quality Control Testing	Antibody Reactive Against Recombinant Protein.
Recommend Usage	Western blot (4 ug/mL) The optimal working dilution should be determined by the end user.
Storage Buffer	In PBS (0.08% sodium azide)
Storage Instruction	Store at -20°C. Aliquot to avoid repeated freezing and thawing.
Note	This product contains sodium azide: a POISONOUS AND HAZARDOUS SUBSTANCE which should be handled by trained staff only.

Applications

- Western Blot (Transfected lysate)

Western blot analysis using Arhgef2 polyclonal antibody (Cat # PAB10113) on HEK293 cell transfected with vector alone (lane 1), Arhgef2-short (lane 2) and Arhgef2-long (lane 3).

Gene Info — Arhgef2

Entrez GeneID [16800](#)

Gene Name Arhgef2

Gene Alias AA408978, GEF, GEF-H1, GEFH1, LFP40, Lbcl1, Lfc, P40, mKIAA0651

Gene Description rho/rac guanine nucleotide exchange factor (GEF) 2

Gene Ontology [Hyperlink](#)

Other Designations lymphoid blast crisis-like 1

Publication Reference

- [The Db1-related protein, Lfc, localizes to microtubules and mediates the activation of Rac signaling pathways in cells.](#)

Glaven JA, Whitehead I, Bagrodia S, Kay R, Cerione RA.

The Journal of Biological Chemistry 1999 Jan; 274(4):2279.

Application: IF, Mouse, NIH/3T3 cells

- [Lfc and Lsc oncoproteins represent two new guanine nucleotide exchange factors for the Rho GTP-binding protein.](#)

Glaven JA, Whitehead IP, Nomanbhoy T, Kay R, Cerione RA.

The Journal of Biological Chemistry 1996 Nov; 271(44):27374.

- [Expression cloning of lfc, a novel oncogene with structural similarities to guanine nucleotide exchange factors and to the regulatory region of protein kinase C.](#)

Whitehead I, Kirk H, Tognon C, Trigo-Gonzalez G, Kay R.

The Journal of Biological Chemistry 1995 Aug; 270(31):18388.

Application: WB-Tr, Mouse, NIH/3T3 cells