

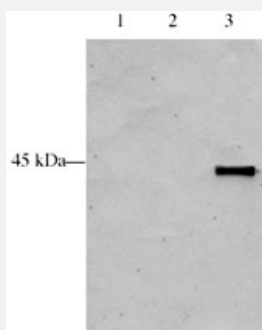
ING5 polyclonal antibody

Catalog # PAB10079

Size 100 ug

Applications

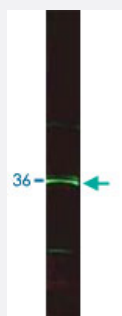
Western Blot (Transfected lysate)



Western blot analysis is shown using ING5 polyclonal antibody (Cat # PAB10079) to detect over expressed Human ING5 present in HeLa cell nuclear extracts.

This western blot shows reactivity with purified recombinant TAP tagged human ING5 protein (lane 3) and does not recognize TAP tagged ING4 on the same membrane (lane 2). A mock purification is shown in lane 1. Comparison to a molecular weight marker (not shown) indicates a single band of ~45.0 KDa corresponding to the expected molecular weight for the recombinant protein. The blot was incubated with a 1:500 dilution of the antibody at room temperature followed by detection using chemiluminescence reagent with a 5-min exposure time. Other detection systems will yield similar results. Personal communication Jacques Cote.

Western Blot (Recombinant protein)



Western blot analysis is shown using ING5 polyclonal antibody (Cat # PAB10079) to detect with purified recombinant human ING5 protein. Indicates a single band of ~36 KDa corresponding to the expected molecular weight for the recombinant protein. Approximately 10 ug of lysate was separated on a 4-20% Tris-Glycine gel by SDS-PAGE and transferred onto nitrocellulose.

The primary antibody diluted to 1 : 1,500.

Followed by washes and reaction with a 1 : 20,000 dilution of IRDye™800 conjugated Rb-a-Goat IgG [H&L] MXHu for 45 min at room temperature. IRDye™800 fluorescence image was captured using the Odyssey® Infrared Imaging System developed by LI-COR. IRDye is a trademark of LI-COR, Inc.

Specification

Product Description	Goat polyclonal antibody raised against synthetic peptide of ING5.
Immunogen	A synthetic peptide corresponding to amino acids 127-140 of human ING5.
Host	Goat
Reactivity	Chicken, Frog, Human, Mouse, Rat
Form	Liquid
Quality Control Testing	Antibody Reactive Against Synthetic Peptide.
Recommend Usage	ELISA (1:4000-1:16000) Western Blot (1:500-1:1000) The optimal working dilution should be determined by the end user.
Storage Buffer	In 20 mM KH ₂ PO ₄ , 150 mM NaCl, pH 7.2 (0.01% sodium azide)
Storage Instruction	Store at 4°C. For long term storage store at -20°C. Aliquot to avoid repeated freezing and thawing.
Note	This product contains sodium azide: a POISONOUS AND HAZARDOUS SUBSTANCE which should be handled by trained staff only.

Applications

- Western Blot (Transfected lysate)

Western blot analysis is shown using ING5 polyclonal antibody (Cat # PAB10079) to detect over expressed Human ING5 present in HeLa cell nuclear extracts.

This western blot shows reactivity with purified recombinant TAP tagged human ING5 protein (lane 3) and does not recognize TAP tagged ING4 on the same membrane (lane 2). A mock purification is shown in lane 1. Comparison to a molecular weight marker (not shown) indicates a single band of ~45.0 KDa corresponding to the expected molecular weight for the recombinant protein. The blot was incubated with a 1:500 dilution of the antibody at room temperature followed by detection using chemiluminescence reagent with a 5-min exposure time. Other detection systems will yield similar results. Personal communication Jacques Cote.

- Western Blot (Recombinant protein)

Western blot analysis is shown using ING5 polyclonal antibody (Cat # PAB10079) to detect with purified recombinant human ING5 protein.

Indicates a single band of ~36 KDa corresponding to the expected molecular weight for the recombinant protein. Approximately 10 ug of lysate was separated on a 4-20% Tris-Glycine gel by SDS-PAGE and transferred onto nitrocellulose.

The primary antibody diluted to 1 : 1,500.

Followed by washes and reaction with a 1 : 20,000 dilution of IRDye™ 800 conjugated Rb-a-Goat IgG [H&L] MXHu for 45 min at room temperature.

IRDye™ 800 fluorescence image was captured using the Odyssey® Infrared Imaging System developed by LI-COR.

IRDye is a trademark of LI-COR, Inc.

- Enzyme-linked Immunoabsorbent Assay

Gene Info — ING5

Entrez GeneID [84289](#)

Protein Accession# [Q8WYH8:NP_115705\(isoform1\);AAH05370\(isoform2\)](#)

Gene Name ING5

Gene Alias FLJ23842, p28ING5

Gene Description inhibitor of growth family, member 5

Omim ID [608525](#)

Gene Ontology [Hyperlink](#)

Gene Summary The protein encoded by this gene is similar to ING1, a tumor suppressor protein that can interact with TP53, inhibit cell growth, and induce apoptosis. This protein contains a PHD-finger, which is a common motif in proteins involved in chromatin remodeling. This protein can bind TP53 and EP 300/p300, a component of the histone acetyl transferase complex, suggesting its involvement in T P53-dependent regulatory pathway. [provided by RefSeq]

Other Designations -

Publication Reference

- [p29ING4 and p28ING5 bind to p53 and p300, and enhance p53 activity.](#)

Shiseki M, Nagashima M, Pedoux RM, Kitahama-Shiseki M, Miura K, Okamura S, Onogi H, Higashimoto Y, Appella E, Yokota J, Harris CC.

Cancer Research 2003 May; 63(10):2373.

Disease

- [Tobacco Use Disorder](#)