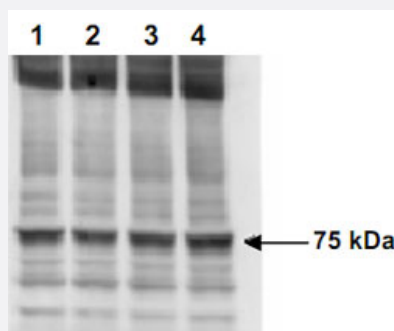


NF2 (phospho S518) polyclonal antibody

Catalog # PAB10071 Size 100 ug

Applications

Western Blot (Cell lysate)



Immunoblotting of NF2 (phospho S518) polyclonal antibody (Cat # PAB10071) to NF2 (Merlin) at pS518 was used at a 1:1000 dilution to detect NF2 by Western blot.

Approximately 12 uL of a mouse cardiac myocyte lysate was loaded per lane on a 4-20% Criterion gel for SDS-PAGE.

Samples were either mock treated (Lane 1) or CLA treated at 4 nM, 20 nM or 100 nM (lanes 2, 3 and 4, respectively) for 45'.

After washing, a 1:5,000 dilution of HRP conjugated Gt-a-Rabbit IgG preceded color development using Amersham's substrate system.

Specification

Product Description	Rabbit polyclonal antibody raised against synthetic phosphopeptide of NF2.
Immunogen	Synthetic phosphopeptide (conjugated with KLH) corresponding to residues surrounding S518 of human NF2.
Host	Rabbit
Reactivity	Human, Mouse
Specificity	This phospho-specific polyclonal antibody is specific to phosphorylated pS518 of human NF2 (neurofibromatosis 2 gene product). Reactivity with non-phosphorylated human NF2 (Merlin) is minimal by ELISA.
Form	Liquid
Quality Control Testing	Antibody Reactive Against Synthetic Peptide.

Recommend Usage	ELISA (1:1200000) Western Blot (1:500- 1:2000) The optimal working dilution should be determined by the end user.
Storage Buffer	In 20 mM KH ₂ PO ₄ , 150 mM NaCl, pH 7.2 (0.01% sodium azide)
Storage Instruction	Store at 4°C. For long term storage store at -20°C. Aliquot to avoid repeated freezing and thawing.
Note	This product contains sodium azide: a POISONOUS AND HAZARDOUS SUBSTANCE which should be handled by trained staff only.

Applications

- Western Blot (Cell lysate)

Immunoblotting of NF2 (phospho S518) polyclonal antibody (Cat # PAB10071) to NF2 (Merlin) at pS518 was used at a 1:1000 dilution to detect NF2 by Western blot.

Approximately 12 uL of a mouse cardiac myocyte lysate was loaded per lane on a 4-20% Criterion gel for SDS-PAGE.

Samples were either mock treated (Lane 1) or CLA treated at 4 nM, 20 nM or 100 nM (lanes 2, 3 and 4, respectively) for 45'.

After washing, a 1:5,000 dilution of HRP conjugated Gt-a-Rabbit IgG preceded color development using Amersham's substrate system.

- Immunohistochemistry

- Enzyme-linked Immunoabsorbent Assay

Gene Info — NF2

Entrez GeneID	4771
Gene Name	NF2
Gene Alias	ACN, BANF, SCH
Gene Description	neurofibromin 2 (merlin)
Omim ID	101000 162091 607174 607379
Gene Ontology	Hyperlink

Gene Summary

This gene encodes a protein that is similar to some members of the ERM (ezrin, radixin, moesin) family of proteins that are thought to link cytoskeletal components with proteins in the cell membrane. This gene product has been shown to interact with cell-surface proteins, proteins involved in cytoskeletal dynamics and proteins involved in regulating ion transport. This gene is expressed at high levels during embryonic development; in adults, significant expression is found in Schwann cells, meningeal cells, lens and nerve. Mutations in this gene are associated with neurofibromatosis type II which is characterized by nervous system and skin tumors and ocular abnormalities. Two predominant isoforms and a number of minor isoforms are produced by alternatively spliced transcripts. [provided by RefSeq]

Other Designations

merlin|moesin-ezrin-radixin like|moesin-ezrin-radixin-like protein|neurofibromin 2|neurofibromin 2 (bilateral acoustic neuroma)|schwannomerlin|schwannomin

Publication Reference

- [Expression of the neurofibromatosis 2 tumor suppressor gene product, merlin, in Schwann cells.](#)

Scherer SS, Gutmann DH.

Journal of Neuroscience Research 1996 Dec; 46(5):595.

- [Expression of the neurofibromatosis 2 \(NF2\) gene isoforms during rat embryonic development.](#)

Gutmann DH, Wright DE, Geist RT, Snider WD.

Human Molecular Genetics 1995 Mar; 4(3):471.

Application: IF, WB-Ti, Rat, Brains, Spinal cords, Tissues

Disease

- [Disease Progression](#)
- [Disease Susceptibility](#)
- [Genetic Predisposition to Disease](#)
- [HIV Infections](#)
- [Meningeal Neoplasms](#)
- [Meningioma](#)
- [Neoplasms](#)
- [Nervous System Neoplasms](#)
- [Neurofibromatosis](#)

- [Neurofibromatosis 2](#)
- [Neuroma](#)
- [Pancreatic cancer](#)
- [Pancreatic Neoplasms](#)
- [Tobacco Use Disorder](#)