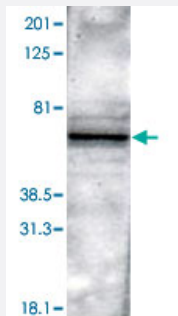


# Pth2r polyclonal antibody

Catalog # PAB0720      Size 100 uL

## Applications



### Western Blot (Tissue lysate)

Western blot analysis of rat brain using rabbit Pth2r polyclonal antibody (Cat # PAB0720) isolated a major band of 63 KDa corresponding to the theoretical molecular weight of Pth2r.

## Specification

<b>Product Description</b>	Rabbit polyclonal antibody raised against synthetic peptide of Pth2r.
<b>Immunogen</b>	A synthetic peptide (conjugated with KLH) corresponding to amino acids 481-501 of rat Pth2r.
<b>Sequence</b>	RQIDSHVTLPGYVWSSEQDC
<b>Host</b>	Rabbit
<b>Reactivity</b>	Rat
<b>Form</b>	Lyophilized
<b>Recommend Usage</b>	Western Blot (1:500-1:1000) The optimal working dilution should be determined by the end user.
<b>Storage Buffer</b>	Lyophilized from PBS
<b>Storage Instruction</b>	Store at 4°C on dry atmosphere. After reconstitution with deionized water, store at -20°C or lower. Aliquot to avoid repeated freezing and thawing.

## Applications

- Western Blot (Tissue lysate)

Western blot analysis of rat brain using rabbit Pth2r polyclonal antibody (Cat # PAB0720) isolated a major band of 63 KDa corresponding to the theoretical molecular weight of Pth2r.

## Gene Info — Pth2r

Entrez GeneID	<a href="#">81753</a>
Protein Accession#	<a href="#">P70555</a>
Gene Name	Pth2r
Gene Alias	Pthr2
Gene Description	parathyroid hormone 2 receptor
Gene Ontology	<a href="#">Hyperlink</a>
Other Designations	parathyroid hormone receptor 2