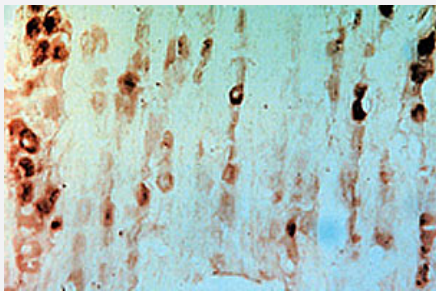


Gfra3 polyclonal antibody

Catalog # PAB0695 Size 100 uL

Applications



Immunohistochemistry

Immunohistochemical staining of rat dorsal root ganglia using rabbit Gfra3 polyclonal antibody (Cat # PAB0695) .

Specification

Product Description	Rabbit polyclonal antibody raised against synthetic peptide of Gfra3.
Immunogen	A synthetic peptide (conjugated with KLH) corresponding to amino acids 1-11 of mouse Gfra3.
Sequence	MGLSWSPRPPL
Host	Rabbit
Reactivity	Mouse, Rat
Form	Lyophilized
Recommend Usage	Immunohistochemistry (1:500-1:1000) Western Blot (1:500-1:1000) The optimal dilution should be determined by the end user.
Storage Buffer	Lyophilized from PBS
Storage Instruction	Store at 4°C on dry atmosphere. After reconstitution with deionized water, store at -20°C or lower. Aliquot to avoid repeated freezing and thawing.

Applications

- Western Blot
- Immunohistochemistry

Immunohistochemical staining of rat dorsal root ganglia using rabbit Gfra3 polyclonal antibody (Cat # PAB0695) .

Gene Info — Gfra3

Entrez GeneID	14587
---------------	-----------------------

Protein Accession#	O35118
--------------------	------------------------

Gene Name	Gfra3
-----------	-------

Gene Alias	Y15110
------------	--------

Gene Description	glial cell line derived neurotrophic factor family receptor alpha 3
------------------	---------------------------------------------------------------------

Gene Ontology	Hyperlink
---------------	---------------------------

Other Designations	-
--------------------	---