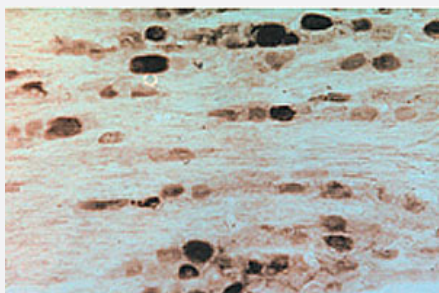


GFRA2 polyclonal antibody

Catalog # PAB0694

Size 100 uL

Applications



Immunohistochemistry

Immunohistochemical staining of rat dorsal root ganglia using rabbit GFRA2 polyclonal antibody (Cat # PAB0694) .

Specification

Product Description	Rabbit polyclonal antibody raised against synthetic peptide of GFRA2.
Immunogen	A synthetic peptide (conjugated with KLH) corresponding to amino acids 376-390 of human GFRA2.
Sequence	PRVEKTPSLPDDLSD
Host	Rabbit
Reactivity	Human, Rat
Form	Lyophilized
Recommend Usage	Immunohistochemistry (1:500-1:1000) Western Blot (1:500-1:1000) The optimal dilution should be determined by the end user.
Storage Buffer	Lyophilized from whole serum.
Storage Instruction	Store at 4°C for short term. For long term storage, store at -20°C on dry atmosphere. After reconstitution with 100 uL of sterile water, store at -20°C. Centrifuge to remove any insoluble material. Or at 2-8°C with an appropriate antibacterial agent. Glycerol (1:1) may be added for an additional stability. Aliquot to avoid repeated freezing and thawing.

Applications

- Western Blot
- Immunohistochemistry

Immunohistochemical staining of rat dorsal root ganglia using rabbit GFRA2 polyclonal antibody (Cat # PAB0694) .

Gene Info — GFRA2

Entrez GeneID [2675](#)

Protein Accession# [O00451](#)

Gene Name GFRA2

Gene Alias GDNFRB, NRTNR-ALPHA, NTNRA, RETL2, TRNR2

Gene Description GDNF family receptor alpha 2

Omim ID [601956](#)

Gene Ontology [Hyperlink](#)

Gene Summary Glial cell line-derived neurotrophic factor (GDNF) and neurturin (NTN) are two structurally related, potent neurotrophic factors that play key roles in the control of neuron survival and differentiation. The protein encoded by this gene is a member of the GDNF receptor family. It is a glycosylphosphatidylinositol(GPI)-linked cell surface receptor for both GDNF and NTN, and mediates activation of the RET tyrosine kinase receptor. This encoded protein acts preferentially as a receptor for NTN compared to its other family member, GDNF family receptor alpha 1. This gene is a candidate gene for RET-associated diseases. Multiple transcript variants encoding different isoforms have been found for this gene. [provided by RefSeq]

Other Designations GFR-alpha 2|PH-linked cell-surface accessory protein|RET ligand 2|TGF-beta related neurotrophic factor receptor 2|TRN receptor, GPI-anchored|glial cell line derived neurotrophic factor receptor, beta|glial cell line-derived neurotrophic factor family receptor

Disease

- [Carcinoma](#)
- [Dyskinesia](#)
- [Genetic Predisposition to Disease](#)

- [Hirschsprung Disease](#)
- [Nasal Polyps](#)
- [Psychiatric Status Rating Scales](#)
- [Psychometrics](#)
- [Schizophrenia](#)
- [Thyroid Neoplasms](#)