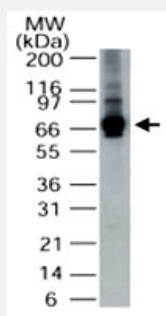


ALAS1 polyclonal antibody

Catalog # PAB0349

Size 100 ug

Applications



Western Blot (Cell lysate)

Western blot analysis of ALAS1 in HepG2 cell lysate. Using ALAS1 polyclonal antibody (Cat # PAB0349) at 1 ug/mL .

Specification

Product Description	Rabbit polyclonal antibody raised against synthetic peptide of ALAS1.
Immunogen	A synthetic peptide corresponding to amino acids 480-530 of human ALAS1.
Host	Rabbit
Reactivity	Human
Form	Liquid
Recommend Usage	The optimal working dilution should be determined by the end user.
Storage Buffer	In buffer containing 0.05% sodium azide, 0.2% gelatin
Storage Instruction	Store at 4°C. For long term storage store at -20°C. Aliquot to avoid repeated freezing and thawing.
Note	This product contains sodium azide: a POISONOUS AND HAZARDOUS SUBSTANCE which should be handled by trained staff only.

Applications

- Western Blot (Cell lysate)

Western blot analysis of ALAS1 in HepG2 cell lysate. Using ALAS1 polyclonal antibody (Cat # PAB0349) at 1 ug/mL .

Gene Info — ALAS1

Entrez GeneID	211
Protein Accession#	P13196
Gene Name	ALAS1
Gene Alias	ALAS, ALAS3, ALASH, MIG4
Gene Description	aminolevulinate, delta-, synthase 1
Omim ID	125290
Gene Ontology	Hyperlink
Gene Summary	Delta-aminolevulinate synthase (ALAS; EC 2.3.1.37) catalyzes the condensation of glycine with succinyl-CoA to form delta-aminolevulinic acid. This nuclear-encoded mitochondrial enzyme is the first and rate-limiting enzyme in the mammalian heme biosynthetic pathway. There are 2 tissue-specific isozymes: a housekeeping enzyme encoded by the ALAS1 gene and an erythroid tissue-specific enzyme encoded by ALAS2 (MIM 301300).[supplied by OMIM]
Other Designations	aminolevulinate, delta, synthase 1 migration-inducing protein 4

Pathway

- [Glycine](#)
- [Metabolic pathways](#)
- [Porphyrin and chlorophyll metabolism](#)

Disease

- [Cardiovascular Diseases](#)

- [Diabetes Mellitus](#)
- [Edema](#)