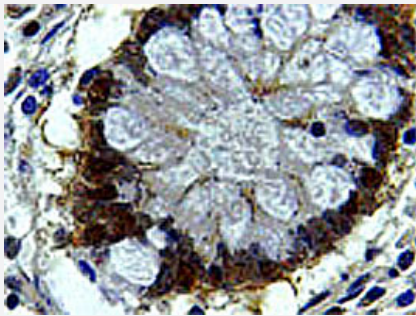


# Bag1 polyclonal antibody

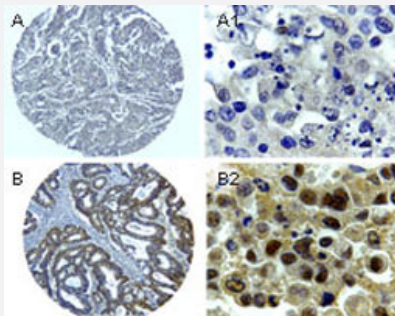
Catalog # PAB0328      Size 50 uL

## Applications



### Immunohistochemistry (Formalin/PFA-fixed paraffin-embedded sections)

Formalin-fixed, paraffin-embedded section of human colon stained for Bag1. Using Bag1 polyclonal antibody (Cat # PAB0328) at 1 : 2000. Hematoxylin-eosin counterstain.



### Immunohistochemistry (Formalin/PFA-fixed paraffin-embedded sections)

Formalin-fixed, paraffin-embedded sections of human colorectal cancer stained for Bag1. Using Bag1 polyclonal antibody (Cat # PAB0328) at 1 : 2000. Hematoxylin-eosin counterstain. Samples from two patients (A and B) are shown. A1 and B1 are higher magnifications from A and B, respectively.

## Specification

<b>Product Description</b>	Rabbit polyclonal antibody raised against synthetic peptide of Bag1.
<b>Immunogen</b>	A synthetic peptide corresponding to amino acids 205-219 of mouse BAG1.
<b>Sequence</b>	QETERLQSTNLALAE
<b>Host</b>	Rabbit
<b>Reactivity</b>	Bovine, Dog, Human, Mouse, Rat
<b>Form</b>	Liquid
<b>Recommend Usage</b>	The optimal working dilution should be determined by the end user.

Storage Buffer	In serum (0.05% sodium azide)
Storage Instruction	Store at -20°C. Aliquot to avoid repeated freezing and thawing.
Note	This product contains sodium azide: a POISONOUS AND HAZARDOUS SUBSTANCE which should be handled by trained staff only.

## Applications

- Immunohistochemistry (Formalin/PFA-fixed paraffin-embedded sections)

Formalin-fixed, paraffin-embedded section of human colon stained for Bag1. Using Bag1 polyclonal antibody (Cat # PAB0328) at 1 : 2000. Hematoxylin-eosin counterstain.

- Immunohistochemistry (Formalin/PFA-fixed paraffin-embedded sections)

Formalin-fixed, paraffin-embedded sections of human colorectal cancer stained for Bag1. Using Bag1 polyclonal antibody (Cat # PAB0328) at 1 : 2000. Hematoxylin-eosin counterstain. Samples from two patients (A and B) are shown. A1 and B1 are higher magnifications from A and B, respectively.

- Immunoprecipitation

## Gene Info — Bag1

Entrez GeneID	<a href="#">12017</a>
Protein Accession#	<a href="#">AAH03722.1</a>
Gene Name	Bag1
Gene Alias	Rap46
Gene Description	BCL2-associated athanogene 1
Gene Ontology	<a href="#">Hyperlink</a>
Other Designations	BCL2-associated athanogene