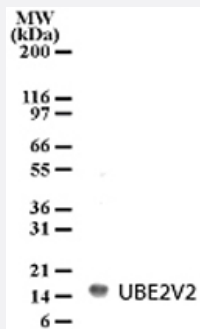


# UBE2V2 polyclonal antibody

Catalog # PAB0193      Size 100 ug

## Applications



### Western Blot (Cell lysate)

Detection of UBE2V2 in HL-60 cell lysate with UBE2V2 polyclonal antibody (Cat # PAB0193) at 2 ug/mL dilution.

## Specification

|                            |  |
|----------------------------|--|
| <b>Product Description</b> | Rabbit polyclonal antibody raised against synthetic peptide of UBE2V2.   |
| <b>Immunogen</b>           | A mixture of synthetic peptides corresponding to amino acids 12-28 of human UBE2V2.                                    |
| <b>Host</b>                | Rabbit   |
| <b>Reactivity</b>          | Human  |
| <b>Form</b>                | Liquid   |
| <b>Recommend Usage</b>     | The optimal working dilution should be determined by the end user.   |
| <b>Storage Buffer</b>      | In PBS (0.05% BSA, 0.05% sodium azide)   |
| <b>Storage Instruction</b> | Store at 4°C. For long term storage store at -20°C.<br>Aliquot to avoid repeated freezing and thawing.                 |
| <b>Note</b>                | This product contains sodium azide: a POISONOUS AND HAZARDOUS SUBSTANCE which should be handled by trained staff only. |

## Applications

- Western Blot (Cell lysate)

Detection of UBE2V2 in HL-60 cell lysate with UBE2V2 polyclonal antibody (Cat # PAB0193) at 2 ug/mL dilution.

## Gene Info — UBE2V2

|                    |  |
|--------------------|--|
| Entrez GeneID      | <a href="#">7336</a>   |
| Gene Name          | UBE2V2   |
| Gene Alias         | DDVIT1, DDVit-1, EDAF-1, EDPF-1, EDPF1, MMS2, UEV-2, UEV2  |
| Gene Description   | ubiquitin-conjugating enzyme E2 variant 2  |
| Omim ID            | <a href="#">603001</a>   |
| Gene Ontology      | <a href="#">Hyperlink</a>  |
| Gene Summary       | Ubiquitin-conjugating enzyme E2 variant proteins constitute a distinct subfamily within the E2 protein family. They have sequence similarity to other ubiquitin-conjugating enzymes but lack the conserved cysteine residue that is critical for the catalytic activity of E2s. The protein encoded by this gene also shares homology with ubiquitin-conjugating enzyme E2 variant 1 and yeast MMS2 gene product. It may be involved in the differentiation of monocytes and enterocytes. [provided by RefSeq] |
| Other Designations | 1 alpha,25-dihydroxyvitamin D3-inducible enterocyte differentiation promoting factor methyl methanesulfonate sensitive 2, S. cerevisiae, homolog of  |