

Bioactive

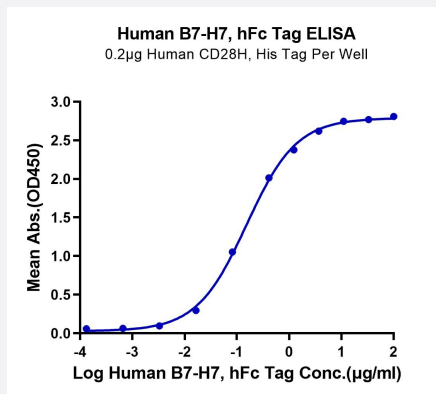
HuPro®

HHLA2 (Human) Recombinant Protein

Catalog # P9945

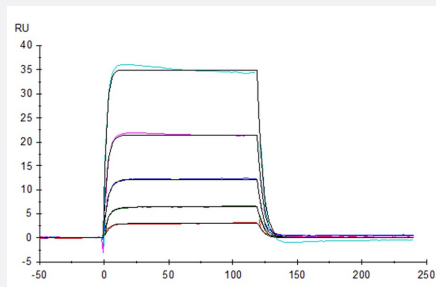
Size 100 ug

Applications



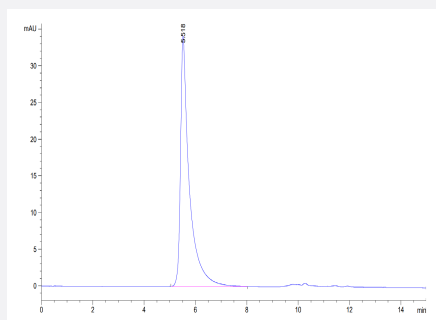
Enzyme-linked Immunoabsorbent Assay

Immobilized Human CD28H, His Tag at 2 ug/mL (100 uL/well) on the plate. Dose response curve for Human B7-H7, hFc Tag with the EC50 of 52.7 ng/mL determined by ELISA (QC Test).



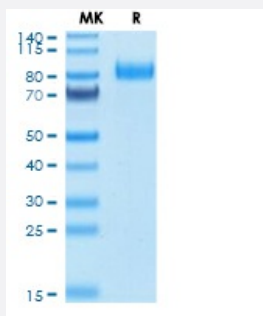
Surface Plasmon Resonance

Human B7-H7, hFc Tag captured on CM5 Chip via Protein A can bind Human KIR3DL3, His Tag with an affinity constant of 334 nM as determined in SPR assay (Biacore T200).



SEC-HPLC

The purity of Human B7-H7 is greater than 95% as determined by SEC-HPLC.



Tris-Bis PAGE

Human B7-H7 on Tris-Bis PAGE under reduced condition. The purity is greater than 95%.

Specification

| | |
|--------------------------------|--|
| Product Description | Human HHLA2 (Q9UM44-1, Ile23-Asn344) partial recombinant protein with hFc tag at C-terminus expressed in HEK293 cells. |
| Sequence | Ile23-Asn344 |
| Host | Human |
| Theoretical MW (kDa) | 63.7 |
| Form | Lyophilized |
| Preparation Method | Mammalian cell (HEK293) expression system |
| Purity | > 95% as determined by Tris-Bis PAGE; > 94% as determined by HPLC |
| Endotoxin Level | < 1 EU per 1 ug of protein (determined by LAL method) |
| Activity | The EC ₅₀ was 52.7 ng/mL, measured by ELISA at 2 ug/mL. The affinity constant of 334 nM as determined in SPR assay (Biacore T200). |
| Quality Control Testing | SEC-HPLC and Tris-Bis PAGE SEC-HPLC The purity of Human B7-H7 is greater than 95% as determined by SEC-HPLC. Tris-Bis PAGE Human B7-H7 on Tris-Bis PAGE under reduced condition. The purity is greater than 95%. |
| Recommend Usage | Biological Activity ELISA SDS-PAGE SPR The optimal working dilution should be determined by the end user. |
| Storage Buffer | Lyophilized from sterile distilled Water is > 100 ug/mL |
| Storage Instruction | Store at 2°C to 8°C for 1 week. For long term storage, aliquot and store at -20°C to -80°C. Aliquot to avoid repeated freezing and thawing. |
| Note | Result of bioactivity analysis |

Applications

- Enzyme-linked Immunoabsorbent Assay

Immobilized Human CD28H, His Tag at 2 ug/mL (100 uL/well) on the plate. Dose response curve for Human B7-H7, hFc Tag with the EC50 of 52.7 ng/mL determined by ELISA (QC Test).

- Functional Study

- SDS-PAGE

- Surface Plasmon Resonance

Human B7-H7, hFc Tag captured on CM5 Chip via Protein A can bind Human KIR3DL3, His Tag with an affinity constant of 334 nM as determined in SPR assay (Biacore T200).

Gene Info — HHLA2

| | |
|---------------|-----------------------|
| Entrez GeneID | 11148 |
|---------------|-----------------------|

| | |
|--------------------|--------------------------|
| Protein Accession# | Q9UM44-1 |
|--------------------|--------------------------|

| | |
|-----------|-------|
| Gene Name | HHLA2 |
|-----------|-------|

| | |
|------------|---|
| Gene Alias | - |
|------------|---|

| | |
|------------------|--------------------------|
| Gene Description | HERV-H LTR-associating 2 |
|------------------|--------------------------|

| | |
|---------|------------------------|
| Omim ID | 604371 |
|---------|------------------------|

| | |
|---------------|---------------------------|
| Gene Ontology | Hyperlink |
|---------------|---------------------------|

| | |
|--------------------|---|
| Other Designations | - |
|--------------------|---|