

Bioactive

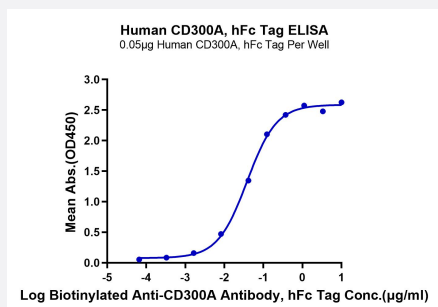
HuPro®

CD300A (Human) Recombinant Protein

Catalog # P9932

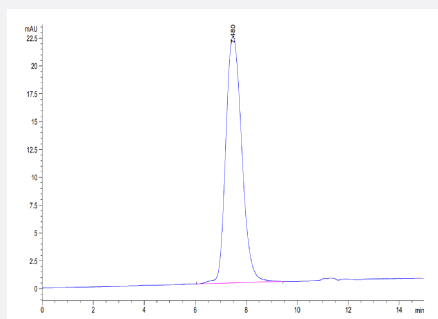
Size 100 ug

Applications



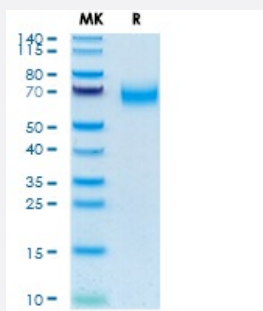
Enzyme-linked Immunoabsorbent Assay

Immobilized Human CD300A, hFc Tag at 0.5 ug/mL (100 uL/Well) on the plate. Dose response curve for Biotinylated Anti-CD300A Antibody, hFc Tag with the EC50 of 38.2 ng/mL determined by ELISA.



SEC-HPLC

The purity of Human CD300A is greater than 95% as determined by SEC-HPLC.



Tris-Bis PAGE

Human CD300A on Tris-Bis PAGE under reduced condition. The purity is greater than 95%.

Specification

Product Description

Human CD300A (Q9UGN4-1, Leu18-Pro180) partial recombinant protein with hFc tag at C-Terminus expressed in HEK293 cells.

Sequence	Leu18-Pro180
Host	Human
Theoretical MW (kDa)	44.4
Form	Lyophilized
Preparation Method	Mammalian cell (HEK293) expression system
Purity	> 95% as determined by Tris-Bis PAGE; > 95% as determined by HPLC
Endotoxin Level	< 1 EU per 1 ug of protein (determined by LAL method)
Activity	The EC ₅₀ was 38.2 ng/mL, measured by ELISA at 0.5 ug/mL.
Quality Control Testing	SEC-HPLC and Tris-Bis PAGE SEC-HPLC The purity of Human CD300A is greater than 95% as determined by SEC-HPLC. Tris-Bis PAGE Human CD300A on Tris-Bis PAGE under reduced condition. The purity is greater than 95%.
Recommend Usage	Biological Activity ELISA SDS-PAGE The optimal working dilution should be determined by the end user.
Storage Buffer	Lyophilized from sterile distilled Water is > 100 ug/mL
Storage Instruction	Store at 2°C to 8°C for 1 week. For long term storage, aliquot and store at -20°C to -80°C. Aliquot to avoid repeated freezing and thawing.
Note	Result of bioactivity analysis

Applications

- Enzyme-linked Immunoabsorbent Assay

Immobilized Human CD300A, hFc Tag at 0.5 ug/mL (100 uL/Well) on the plate. Dose response curve for Biotinylated Anti-CD300A Antibody, hFc Tag with the EC₅₀ of 38.2 ng/mL determined by ELISA.

- Functional Study

- SDS-PAGE

Gene Info — CD300A

Entrez GeneID	11314
Protein Accession#	Q9UGN4-1
Gene Name	CD300A
Gene Alias	CMRF-35-H9, CMRF-35H, CMRF35H, CMRF35H9, IGSF12, IRC1, IRC2, IRp60
Gene Description	CD300a molecule
Omim ID	606790
Gene Ontology	Hyperlink
Gene Summary	The CMRF35 antigen (CMRF35A; MIM 606786), which was identified by reactivity with a monoclonal antibody, is present on monocytes, neutrophils, and some T and B lymphocytes. CMRF35H is recognized by the same antibody and is distinct from CMRF35 (Green et al., 1998 [PubMed 9701027]).[supplied by OMIM]
Other Designations	CD300a antigen CMRF35H leukocyte immunoglobulin-like receptor leukocyte membrane antigen