

Bioactive

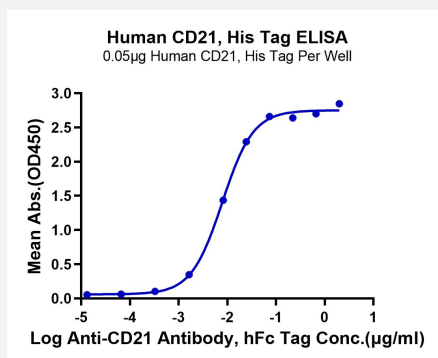
HuPro®

CR2 (Human) Recombinant Protein

Catalog # P9908

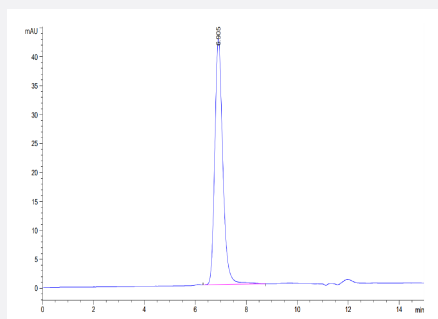
Size 100 ug

Applications



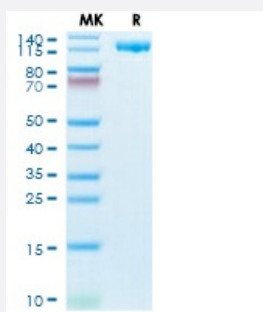
Enzyme-linked Immunoabsorbent Assay

Immobilized Human CD21, His Tag at 0.5 ug/mL (100 uL/Well) on the plate. Dose response curve for Anti-CD21 Antibody, hFc Tag with the EC50 of 7.9 ng/mL determined by ELISA.



SEC-HPLC

The purity of Human CD21 is greater than 95% as determined by SEC-HPLC.



Tris-Bis PAGE

Human CD21 on Tris-Bis PAGE under reduced condition. The purity is greater than 95%.

Specification

Product Description	Human CR2 (P20023-1, Ile21-Arg971) partial recombinant protein with His tag at C-Terminus expressed in HEK293 cells.
Sequence	Ile21-Arg971
Host	Human
Theoretical MW (kDa)	105.3
Form	Lyophilized
Preparation Method	Mammalian cell (HEK293) expression system
Purity	> 95% as determined by Tris-Bis PAGE; > 95% as determined by HPLC
Endotoxin Level	< 1 EU per 1 ug of protein (determined by LAL method)
Activity	The EC ₅₀ was 7.9 ng/mL, measured by ELISA at 0.5 ug/mL.
Quality Control Testing	SEC-HPLC and Tris-Bis PAGE SEC-HPLC The purity of Human CD21 is greater than 95% as determined by SEC-HPLC. Tris-Bis PAGE Human CD21 on Tris-Bis PAGE under reduced condition. The purity is greater than 95%.
Recommend Usage	Biological Activity ELISA SDS-PAGE The optimal working dilution should be determined by the end user.
Storage Buffer	Lyophilized from sterile distilled Water is > 100 ug/mL
Storage Instruction	Store at 2°C to 8°C for 1 week. For long term storage, aliquot and store at -20°C to -80°C. Aliquot to avoid repeated freezing and thawing.
Note	Result of bioactivity analysis

Applications

- Enzyme-linked Immunoabsorbent Assay

Immobilized Human CD21, His Tag at 0.5 ug/mL (100 uL/Well) on the plate. Dose response curve for Anti-CD21 Antibody, hFc Tag with the EC₅₀ of 7.9 ng/mL determined by ELISA.

- Functional Study

- SDS-PAGE

Gene Info — CR2

Entrez GeneID [1380](#)**Protein Accession#** [P20023-1](#)**Gene Name** CR2**Gene Alias** C3DR, CD21, SLEB9**Gene Description** complement component (3d/Epstein Barr virus) receptor 2**Omim ID** [120650 610927](#)**Gene Ontology** [Hyperlink](#)

Gene Summary Complement component receptor-2 (CR2) is the membrane protein on B lymphocytes to which the Epstein-Barr virus (EBV) binds during infection of these cells. See also CR1 (MIM 120620). Yef enof et al. (1976) [PubMed 181330] found complete overlapping of EBV receptors and C3 (MIM 120700) receptors on human B lymphocytes.[supplied by OMIM]

Other Designations OTTHUMP00000034421|OTTHUMP00000034447

Pathway

- [B cell receptor signaling pathway](#)
- [Complement and coagulation cascades](#)
- [Hematopoietic cell lineage](#)

Disease

- [Genetic Predisposition to Disease](#)
- [Lupus Erythematosus](#)
- [Lymphoma](#)
- [Macular Degeneration](#)
- [Nasopharyngeal Neoplasms](#)
- [Parkinson disease](#)