

Bioactive

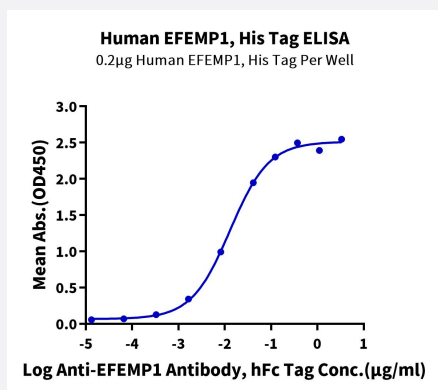
HuPro®

EFEMP1 (Human) Recombinant Protein

Catalog # P9889

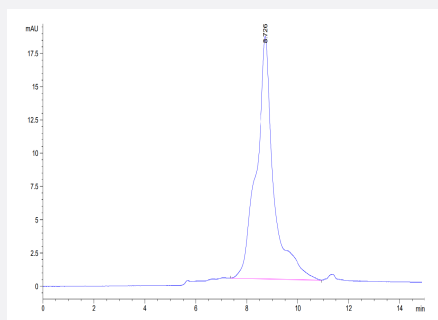
Size 100 ug

Applications



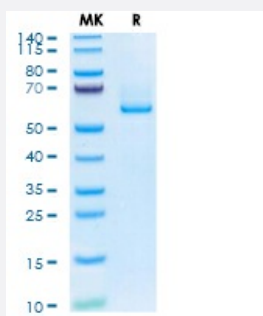
Enzyme-linked Immunoabsorbent Assay

Immobilized Human EFEMP1, His Tag at 2 ug/mL (100 uL/Well) on the plate. Dose response curve for Anti-EFEMP1 Antibody, hFc Tag with the EC50 of 13.0 ng/mL determined by ELISA.



SEC-HPLC

The purity of Human EFEMP1 is greater than 95% as determined by SEC-HPLC.



Tris-Bis PAGE

Human EFEMP1 on Tris-Bis PAGE under reduced condition. The purity is greater than 95%.

Specification

Product Description	Human EFEMP1 (Q12805-1, Gln18-Phe493) partial recombinant protein with His tag at N-Terminus expressed in HEK293 cells.
Sequence	Gln18-Phe493
Host	Human
Theoretical MW (kDa)	53.9
Form	Lyophilized
Preparation Method	Mammalian cell (HEK293) expression system
Purity	> 95% as determined by Tris-Bis PAGE; > 95% as determined by HPLC
Endotoxin Level	< 1 EU per 1 ug of protein (determined by LAL method)
Activity	The EC ₅₀ was 13.0 ng/mL, measured by ELISA at 2 ug/mL.
Quality Control Testing	SEC-HPLC and Tris-Bis PAGE SEC-HPLC The purity of Human EFEMP1 is greater than 95% as determined by SEC-HPLC. Tris-Bis PAGE Human EFEMP1 on Tris-Bis PAGE under reduced condition. The purity is greater than 95%.
Recommend Usage	Biological Activity ELISA SDS-PAGE The optimal working dilution should be determined by the end user.
Storage Buffer	Lyophilized from sterile distilled Water is > 100 ug/mL
Storage Instruction	Store at 2°C to 8°C for 1 week. For long term storage, aliquot and store at -20°C to -80°C. Aliquot to avoid repeated freezing and thawing.
Note	Result of bioactivity analysis

Applications

- Enzyme-linked Immunoabsorbent Assay

Immobilized Human EFEMP1, His Tag at 2 ug/mL (100 uL/Well) on the plate. Dose response curve for Anti-EFEMP1 Antibody, hFc Tag with the EC₅₀ of 13.0 ng/mL determined by ELISA.

- Functional Study

- SDS-PAGE

Gene Info — EFEMP1

Entrez GeneID [2202](#)

Protein Accession# [Q12805-1](#)

Gene Name EFEMP1

Gene Alias DHRD, DRAD, FBLN3, FBNL, FLJ35535, MGC111353, MLVT, MTLV, S1-5

Gene Description EGF-containing fibulin-like extracellular matrix protein 1

Omim ID [126600 601548](#)

Gene Ontology [Hyperlink](#)

Gene Summary This gene spans approximately 18 kb of genomic DNA and consists of 12 exons. Alternative splice patterns in the 5' UTR result in three transcript variants encoding the same extracellular matrix protein. Mutations in this gene are associated with Doyme honeycomb retinal dystrophy. [provided by RefSeq]

Other Designations fibrillin-like fibulin 3

Disease

- [Atherosclerosis](#)
- [Calcinosis](#)
- [Coronary Artery Disease](#)
- [Crohn Disease](#)
- [Diabetes Mellitus](#)
- [Genetic Predisposition to Disease](#)
- [Growth Disorders](#)
- [Macular Degeneration](#)
- [Retinal Degeneration](#)
- [Retinal Diseases](#)
- [Retinal Drusen](#)
- [Tobacco Use Disorder](#)