

Bioactive

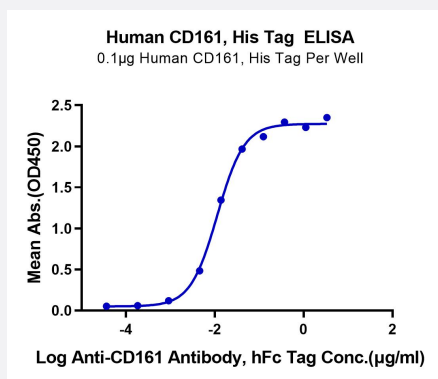
HuPro®

KLRB1 (Human) Recombinant Protein

Catalog # P9884

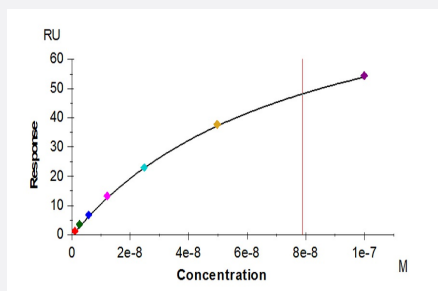
Size 100 ug

Applications



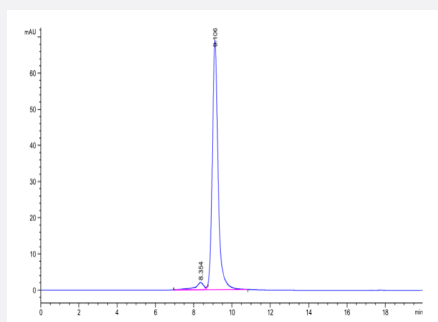
Enzyme-linked Immunoabsorbent Assay

Immobilized Human CD161, His Tag at 1 ug/mL (100 uL/Well) on the plate. Dose response curve for Anti-CD161 Antibody, hFc Tag with the EC50 of 11.4 ng/mL determined by ELISA (QC Test).



Surface Plasmon Resonance

Anti-CD161 Antibody, hFc tag captured on CM5 Chip via Anti-hFc IgG can bind Human CD161, His Tag with an affinity constant of 78.8 nM as determined in SPR assay (Biacore T200).



SEC-HPLC

The purity of Human CD161 is greater than 95% as determined by SEC-HPLC.

Tris-Bis PAGE

Human CD161 on Tris-Bis PAGE under reduced condition. The purity is greater than 95%

Specification

Product Description	Human KLRB1 (Q12918-1, Gln67-Ser225) partial recombinant protein with His tag at C-Terminus expressed in HEK293 cells.
Sequence	Gln67-Ser225
Host	Human
Theoretical MW (kDa)	19.6
Form	Lyophilized
Preparation Method	Mammalian cell (HEK293) expression system
Purity	> 95% as determined by Tris-Bis PAGE; > 95% as determined by HPLC
Endotoxin Level	< 1 EU per 1 ug of protein (determined by LAL method)
Activity	The EC ₅₀ was 11.4 ng/mL, measured by ELISA at 1 ug/mL. The affinity constant of 78.8 nM as determined in SPR assay (Biacore T200).
Quality Control Testing	SEC-HPLC and Tris-Bis PAGE SEC-HPLC The purity of Human CD161 is greater than 95% as determined by SEC-HPLC. Tris-Bis PAGE Human CD161 on Tris-Bis PAGE under reduced condition. The purity is greater than 95%
Recommend Usage	Biological Activity ELISA SDS-PAGE SPR The optimal working dilution should be determined by the end user.
Storage Buffer	Lyophilized from sterile distilled Water is > 100 ug/mL
Storage Instruction	Store at 2°C to 8°C for 1 week. For long term storage, aliquot and store at -20°C to -80°C. Aliquot to avoid repeated freezing and thawing.
Note	Result of bioactivity analysis

Applications

- Enzyme-linked Immunoabsorbent Assay

Immobilized Human CD161, His Tag at 1 ug/mL (100 uL/Well) on the plate. Dose response curve for Anti-CD161 Antibody, hFc Tag with the EC50 of 11.4 ng/mL determined by ELISA (QC Test).

- Functional Study

- SDS-PAGE

- Surface Plasmon Resonance

Anti-CD161 Antibody, hFc tag captured on CM5 Chip via Anti-hFc IgG can bind Human CD161, His Tag with an affinity constant of 78.8 nM as determined in SPR assay (Biacore T200).

Gene Info — KLRB1

Entrez GeneID	3820
Protein Accession#	Q12918-1
Gene Name	KLRB1
Gene Alias	CD161, CLEC5B, MGC138614, NKR, NKR-P1, NKR-P1A, NKRP1A, hNKR-P1A
Gene Description	killer cell lectin-like receptor subfamily B, member 1
Omim ID	602890
Gene Ontology	Hyperlink
Gene Summary	Natural killer (NK) cells are lymphocytes that mediate cytotoxicity and secrete cytokines after immune stimulation. Several genes of the C-type lectin superfamily, including the rodent NKRP1 family of glycoproteins, are expressed by NK cells and may be involved in the regulation of NK cell function. The KLRB1 protein contains an extracellular domain with several motifs characteristic of C-type lectins, a transmembrane domain, and a cytoplasmic domain. The KLRB1 protein is classified as a type II membrane protein because it has an external C terminus. [provided by RefSeq]
Other Designations	-

Disease

- [Genetic Predisposition to Disease](#)

- [Multiple Sclerosis](#)