

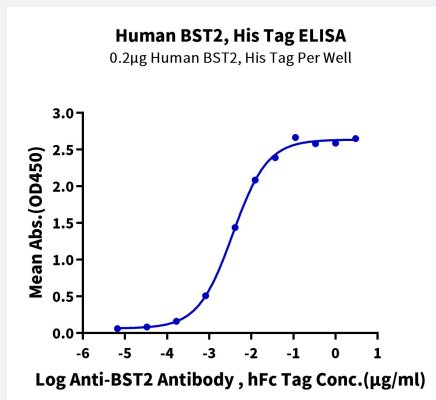
Bioactive

HuPro®

BST2 (Human) Recombinant Protein

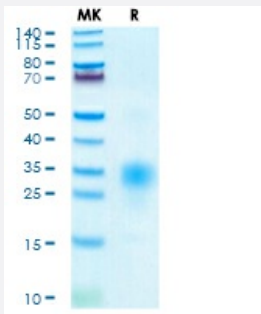
Catalog # P9876 Size 100 ug

Applications



Enzyme-linked Immunoabsorbent Assay

Immobilized Human BST2, His Tag at 2 ug/mL (100 uL/Well) on the plate. Dose response curve for Anti-BST2 Antibody, hFc Tag with the EC50 of 3.6 ng/mL determined by ELISA.



Tris-Bis PAGE

Human BST2 on Tris-Bis PAGE under reduced condition. The purity is greater than 95%.

Specification

Product Description	Human BST2 (Q10589-1, Asn49-Ser161) partial recombinant protein with His tag at N-Terminus expressed in HEK293 cells.
Sequence	Asn49-Ser161
Host	Human
Theoretical MW (kDa)	14.5
Form	Lyophilized

Preparation Method	Mammalian cell (HEK293) expression system
Purity	> 95% as determined by Tris-Bis PAGE
Endotoxin Level	< 1 EU per 1 ug of protein (determined by LAL method)
Activity	The EC ₅₀ was 3.6 ng/mL, measured by ELISA at 2 ug/mL.
Quality Control Testing	Tris-Bis PAGE Tris-Bis PAGE Human BST2 on Tris-Bis PAGE under reduced condition. The purity is greater than 95%.
Recommend Usage	Biological Activity ELISA SDS-PAGE The optimal working dilution should be determined by the end user.
Storage Buffer	Lyophilized from sterile distilled Water is > 100 ug/mL
Storage Instruction	Store at 2°C to 8°C for 1 week. For long term storage, aliquot and store at -20°C to -80°C. Aliquot to avoid repeated freezing and thawing.
Note	Result of bioactivity analysis

Applications

- Enzyme-linked Immunoabsorbent Assay

Immobilized Human BST2, His Tag at 2 ug/mL (100 uL/Well) on the plate. Dose response curve for Anti-BST2 Antibody, hFc Tag with the EC₅₀ of 3.6 ng/mL determined by ELISA.

- Functional Study

- SDS-PAGE

Gene Info — BST2

Entrez GeneID	684
Protein Accession#	Q10589-1
Gene Name	BST2
Gene Alias	CD317
Gene Description	bone marrow stromal cell antigen 2

Omim ID [600534](#)

Gene Ontology [Hyperlink](#)

Gene Summary Bone marrow stromal cells are involved in the growth and development of B-cells. The specific function of the protein encoded by the bone marrow stromal cell antigen 2 is undetermined; however, this protein may play a role in pre-B-cell growth and in rheumatoid arthritis. [provided by RefSeq

Other Designations tetherin

Disease

- [Genetic Predisposition to Disease](#)
- [Ovarian Neoplasms](#)