

Bioactive

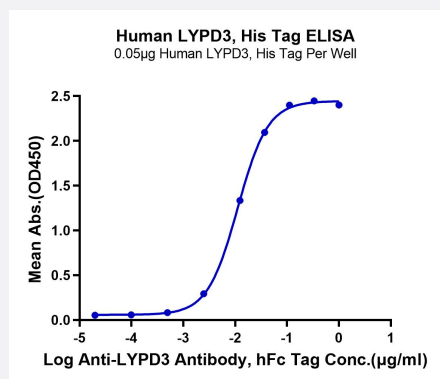
HuPro®

LYPD3 (Human) Recombinant Protein

Catalog # P9864

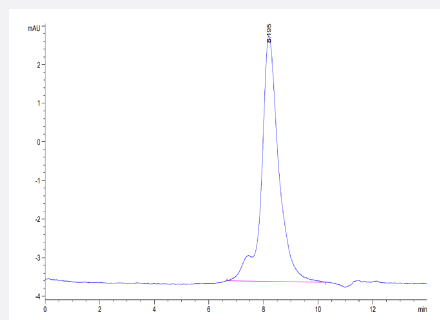
Size 100 ug

Applications



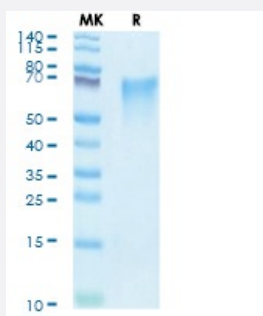
Enzyme-linked Immunoabsorbent Assay

Immobilized Human LYPD3, His Tag at 0.5 ug/mL (100 uL/Well) on the plate. Dose response curve for Anti-LYPD3 Ab., hFc Tag with the EC50 of 10.9 ng/mL determined by ELISA (QC Test).



SEC-HPLC

The purity of Human LYPD3 is greater than 95% as determined by SEC-HPLC.



Tris-Bis PAGE

Human LYPD3 on Tris-Bis PAGE under reduced condition. The purity is greater than 95%.

Specification

Product Description	Human LYPD3 (O95274, Leu31-His286) partial recombinant protein with His tag at C-Terminus expressed in HEK293 cells.
Sequence	Leu31-His286
Host	Human
Theoretical MW (kDa)	27.8
Form	Lyophilized
Preparation Method	Mammalian cell (HEK293) expression system
Purity	> 95% as determined by Tris-Bis PAGE; > 95% as determined by HPLC
Endotoxin Level	< 1 EU per 1 ug of protein (determined by LAL method)
Activity	The EC ₅₀ was 10.9 ng/mL, measured by ELISA at 0.5 ug/mL.
Quality Control Testing	SEC-HPLC and Tris-Bis PAGE SEC-HPLC The purity of Human LYPD3 is greater than 95% as determined by SEC-HPLC. Tris-Bis PAGE Human LYPD3 on Tris-Bis PAGE under reduced condition. The purity is greater than 95%.
Recommend Usage	Biological Activity ELISA SDS-PAGE The optimal working dilution should be determined by the end user.
Storage Buffer	Lyophilized from sterile distilled Water is > 100 ug/mL
Storage Instruction	Store at 2°C to 8°C for 1 week. For long term storage, aliquot and store at -20°C to -80°C. Aliquot to avoid repeated freezing and thawing.
Note	Result of bioactivity analysis

Applications

- Enzyme-linked Immunoabsorbent Assay

Immobilized Human LYPD3, His Tag at 0.5 ug/mL (100 uL/Well) on the plate. Dose response curve for Anti-LYPD3 Ab., hFc Tag with the EC₅₀ of 10.9 ng/mL determined by ELISA (QC Test).

- Functional Study

- SDS-PAGE

Gene Info — LYPD3

Entrez GeneID [27076](#)**Protein Accession#** [O95274](#)**Gene Name** LYPD3**Gene Alias** C4.4A**Gene Description** LY6/PLAUR domain containing 3**Omim ID** [609484](#)**Gene Ontology** [Hyperlink](#)**Other Designations** 2310061G07Rik|GPI-anchored metastasis-associated protein homolog