

Bioactive

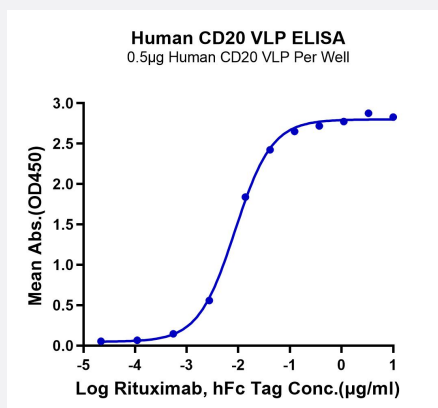
HuPro®

# MS4A1 (Human) Recombinant Protein

Catalog # P9859

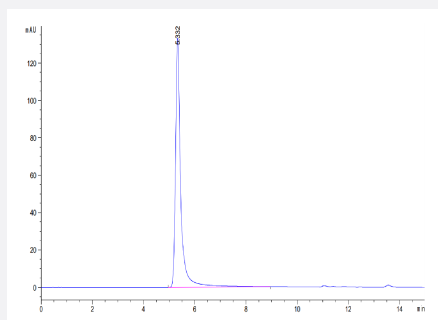
Size 100 ug

## Applications



### Enzyme-linked Immunoabsorbent Assay

Immobilized Human CD20 VLP at 5 ug/mL (100 uL/Well) on plate on the plate. Dose response curve for Rituximab, hFc Tag with the EC50 of 8.7 ng/mL determined by ELISA (QC Test).



### SEC-HPLC

The purity of Human CD20 VLP is greater than 95% as determined by SEC-HPLC.

## Specification

|                      |                                                                                            |
|----------------------|--------------------------------------------------------------------------------------------|
| Product Description  | Human MS4A1 (P11836-1, Met1-Pro297) partial recombinant protein expressed in HEK293 cells. |
| Sequence             | Met1-Pro297                                                                                |
| Host                 | Human                                                                                      |
| Theoretical MW (kDa) | Predicted MW: 34.3                                                                         |
| Form                 | Lyophilized                                                                                |

|                         |                                                                                                                                                |
|-------------------------|------------------------------------------------------------------------------------------------------------------------------------------------|
| Preparation Method      | Mammalian cell (HEK293) expression system                                                                                                      |
| Purity                  | > 95% as determined by HPLC                                                                                                                    |
| Endotoxin Level         | < 1 EU per 1 ug of protein (determined by LAL method)                                                                                          |
| Activity                | The EC <sub>50</sub> was 8.7 ng/mL, measured by ELISA at 5 ug/mL.                                                                              |
| Quality Control Testing | SEC-HPLC<br>SEC-HPLC<br>The purity of Human CD20 VLP is greater than 95% as determined by SEC-HPLC.                                            |
| Recommend Usage         | Biological Activity<br>ELISA<br>The optimal working dilution should be determined by the end user.                                             |
| Storage Buffer          | Lyophilized from sterile distilled Water is > 100 ug/mL                                                                                        |
| Storage Instruction     | Store at 2°C to 8°C for 1 week. For long term storage, aliquot and store at -20°C to -80°C.<br>Aliquot to avoid repeated freezing and thawing. |
| Note                    | Result of bioactivity analysis                                                                                                                 |

## Applications

- Enzyme-linked Immunoabsorbent Assay

Immobilized Human CD20 VLP at 5 ug/mL (100 uL/Well) on plate on the plate. Dose response curve for Rituximab, hFc Tag with the EC<sub>50</sub> of 8.7 ng/mL determined by ELISA (QC Test).

- Functional Study

- SDS-PAGE

## Gene Info — MS4A1

|                    |                                                    |
|--------------------|----------------------------------------------------|
| Entrez GeneID      | <a href="#">931</a>                                |
| Protein Accession# | <a href="#">P11836-1</a>                           |
| Gene Name          | MS4A1                                              |
| Gene Alias         | B1, Bp35, CD20, LEU-16, MGC3969, MS4A2, S7         |
| Gene Description   | membrane-spanning 4-domains, subfamily A, member 1 |

Omim ID [112210](#)

Gene Ontology [Hyperlink](#)

**Gene Summary**

This gene encodes a member of the membrane-spanning 4A gene family. Members of this nascent protein family are characterized by common structural features and similar intron/exon splice boundaries and display unique expression patterns among hematopoietic cells and nonlymphoid tissues. This gene encodes a B-lymphocyte surface molecule which plays a role in the development and differentiation of B-cells into plasma cells. This family member is localized to 11q12, among a cluster of family members. Alternative splicing of this gene results in two transcript variants which encode the same protein. [provided by RefSeq]

**Other Designations** B-lymphocyte cell-surface antigen B1|CD20 antigen|CD20 receptor

## Pathway

- [Hematopoietic cell lineage](#)

## Disease

- [Breast cancer](#)
- [Breast Neoplasms](#)
- [Genetic Predisposition to Disease](#)
- [Lymphoma](#)
- [Neoplasm Recurrence](#)
- [Ovarian cancer](#)