

Bioactive

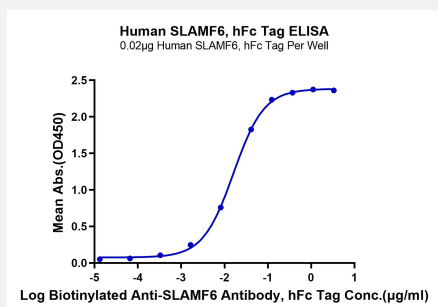
HuPro®

# SLAMF6 (Human) Recombinant Protein

Catalog # P9857

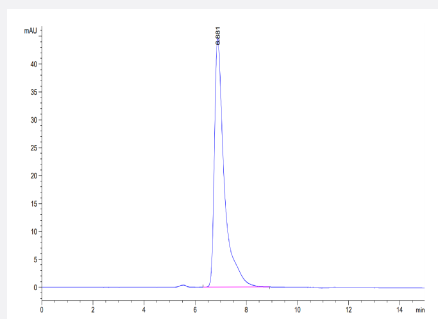
Size 100 ug

## Applications



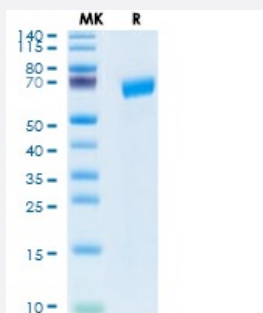
## Enzyme-linked Immunoabsorbent Assay

Immobilized Human SLAMF6, hFc Tag at 0.2 ug/mL (100 uL/well) on the plate. Dose response curve for Biotinylated Anti-SLAMF6 Antibody, hFc Tag with the EC50 of 16.1 ng/mL determined by ELISA.



## SEC-HPLC

The purity of Human SLAMF6 is greater than 95% as determined by SEC-HPLC.



## Tris-Bis PAGE

Human SLAMF6 on Tris-Bis PAGE under reduced condition. The purity is greater than 95%.

## Specification

### Product Description

Human SLAMF6 (Q96DU3-1, Gln22-Met226) partial recombinant protein with hFc tag at C-Terminus expressed in HEK293 cells.

Sequence	Gln22-Met226
Host	Human
Theoretical MW (kDa)	49.8
Form	Lyophilized
Preparation Method	Mammalian cell (HEK293) expression system
Purity	> 95% as determined by Tris-Bis PAGE; > 95% as determined by HPLC
Endotoxin Level	< 1 EU per 1 ug of protein (determined by LAL method)
Activity	The EC <sub>50</sub> was 16.1 ng/mL, measured by ELISA at 0.2 ug/mL.
Quality Control Testing	SEC-HPLC and Tris-Bis PAGE SEC-HPLC The purity of Human SLAMF6 is greater than 95% as determined by SEC-HPLC. Tris-Bis PAGE Human SLAMF6 on Tris-Bis PAGE under reduced condition. The purity is greater than 95%.
Recommend Usage	Biological Activity ELISA SDS-PAGE The optimal working dilution should be determined by the end user.
Storage Buffer	Lyophilized from sterile distilled Water is > 100 ug/mL
Storage Instruction	Store at 2°C to 8°C for 1 week. For long term storage, aliquot and store at -20°C to -80°C. Aliquot to avoid repeated freezing and thawing.
Note	Result of bioactivity analysis

## Applications

- Enzyme-linked Immunoabsorbent Assay

Immobilized Human SLAMF6, hFc Tag at 0.2 ug/mL (100 uL/well) on the plate. Dose response curve for Biotinylated Anti-SLAMF6 Antibody, hFc Tag with the EC<sub>50</sub> of 16.1 ng/mL determined by ELISA.

- Functional Study

- SDS-PAGE

## Gene Info — SLAMF6

Entrez GeneID	<a href="#">114836</a>
Protein Accession#	<a href="#">Q96DU3-1</a>
Gene Name	SLAMF6
Gene Alias	KALI, KAL1b, Ly108, MGC104953, NTB-A, NTBA, SF2000
Gene Description	SLAM family member 6
Omim ID	<a href="#">606446</a>
Gene Ontology	<a href="#">Hyperlink</a>
Gene Summary	<p>The protein encoded by this gene is a type I transmembrane protein, belonging to the CD2 subfamily of the immunoglobulin superfamily. This encoded protein is expressed on Natural killer (NK), T, and B lymphocytes. It undergoes tyrosine phosphorylation and associates with the Src homology 2 domain-containing protein (SH2D1A) as well as with SH2 domain-containing phosphatases (SHPs). It may function as a coreceptor in the process of NK cell activation. It can also mediate inhibitory signals in NK cells from X-linked lymphoproliferative patients. [provided by RefSeq]</p>
Other Designations	NTBA receptor OTTHUMP00000024348 activating NK receptor natural killer-, T- and B-cell antigen

## Disease

- [Cardiovascular Diseases](#)
- [Diabetes Mellitus](#)
- [Edema](#)
- [Tobacco Use Disorder](#)