

Bioactive

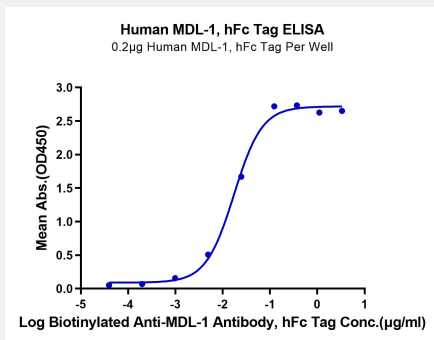
HuPro®

# CLEC5A (Human) Recombinant Protein

Catalog # P9839

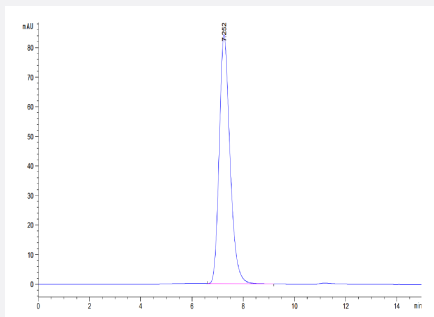
Size 100 ug

## Applications



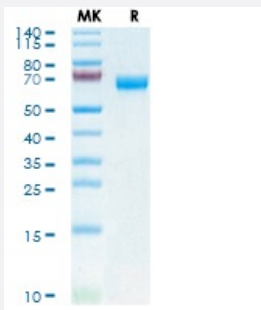
### Enzyme-linked Immunoabsorbent Assay

Immobilized Human MDL-1, hFc Tag at 2 ug/mL (100 uL/well) on the plate. Dose response curve for Biotinylated Anti-MDL-1 Antibody, hFc Tag with the EC50 of 17.4 ng/mL determined by ELISA.



### SEC-HPLC

The purity of Human MDL-1 is greater than 95% as determined by SEC-HPLC.



### Tris-Bis PAGE

Human MDL-1 on Tris-Bis PAGE under reduced condition. The purity is greater than 95%.

## Specification

### Product Description

Human CLEC5A (Q9NY25-1, Tyr26-Lys188) partial recombinant protein with hFc tag at N-Terminus expressed in HEK293 cells.

Sequence	Tyr26-Lys188
Host	Human
Theoretical MW (kDa)	46
Form	Lyophilized
Preparation Method	Mammalian cell (HEK293) expression system
Purity	> 95% as determined by Tris-Bis PAGE; > 95% as determined by HPLC
Endotoxin Level	< 1 EU per 1 ug of protein (determined by LAL method)
Activity	The EC <sub>50</sub> was 17.4 ng/mL, measured by ELISA at 2 ug/mL.
Quality Control Testing	SEC-HPLC and Tris-Bis PAGE SEC-HPLC The purity of Human MDL-1 is greater than 95% as determined by SEC-HPLC. Tris-Bis PAGE Human MDL-1 on Tris-Bis PAGE under reduced condition. The purity is greater than 95%.
Recommend Usage	Biological Activity ELISA SDS-PAGE The optimal working dilution should be determined by the end user.
Storage Buffer	Lyophilized from sterile distilled Water is > 100 ug/mL
Storage Instruction	Store at 2°C to 8°C for 1 week. For long term storage, aliquot and store at -20°C to -80°C. Aliquot to avoid repeated freezing and thawing.
Note	Result of bioactivity analysis

## Applications

- Enzyme-linked Immunoabsorbent Assay

Immobilized Human MDL-1, hFc Tag at 2 ug/mL (100 uL/well) on the plate. Dose response curve for Biotinylated Anti-MDL-1 Antibody, hFc Tag with the EC<sub>50</sub> of 17.4 ng/mL determined by ELISA.

- Functional Study

- SDS-PAGE

## Gene Info — CLEC5A

Entrez GeneID	<a href="#">23601</a>
Protein Accession#	<a href="#">Q9NY25-1</a>
Gene Name	CLEC5A
Gene Alias	CLECSF5, MDL-1, MDL1, MGC138304
Gene Description	C-type lectin domain family 5, member A
Omim ID	<a href="#">604987</a>
Gene Ontology	<a href="#">Hyperlink</a>
Gene Summary	<p>This gene encodes a member of the C-type lectin/C-type lectin-like domain (CTL/CTLD) superfamily. Members of this family share a common protein fold and have diverse functions, such as cell adhesion, cell-cell signalling, glycoprotein turnover, and roles in inflammation and immune response. The encoded type II transmembrane protein interacts with dnax-activation protein 12 and may play a role in cell activation. Alternative splice variants have been described but their full-length sequence has not been determined. [provided by RefSeq]</p>
Other Designations	C-type (calcium dependent, carbohydrate-recognition domain) lectin, superfamily member 5 C-type lectin, superfamily member 5 myeloid DAP12-associating lectin-1