

Bioactive

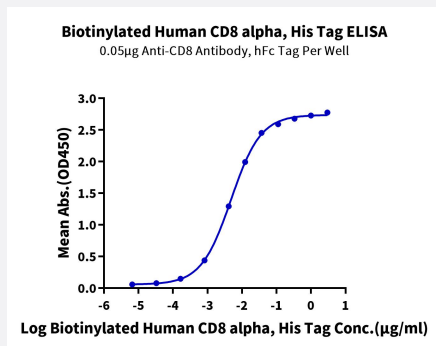
HuPro®

# CD8A (Human) Recombinant Protein

Catalog # P9829

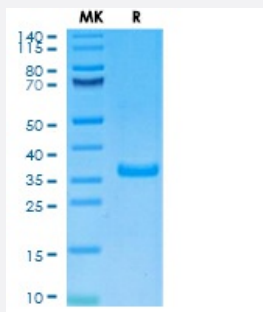
Size 100 ug

## Applications



### Enzyme-linked Immunoabsorbent Assay

Immobilized Anti-CD8 Antibody, hFc Tag at 0.5 ug/mL (100 uL/well) on the plate. Dose response curve for Biotinylated Human CD8 alpha, His Tag with the EC50 of 4.8 ng/mL determined by ELISA.



### Tris-Bis PAGE

Biotinylated Human CD8 alpha on Tris-Bis PAGE under reduced condition. The purity is greater than 95%

## Specification

### Product Description

Human CD8A (P01732-1, Ser22-Asp182) partial recombinant protein with His-Avi tag at C-Terminus expressed in HEK293 cells.

### Sequence

Ser22-Asp182

### Host

Human

### Theoretical MW (kDa)

20.5

### Form

Lyophilized

Preparation Method	Mammalian cell (HEK293) expression system
Purity	> 95% as determined by Tris-Bis PAGE
Endotoxin Level	< 1 EU per 1 ug of protein (determined by LAL method)
Activity	The EC <sub>50</sub> was 4.8 ng/mL, measured by ELISA at 0.5 ug/mL.
Quality Control Testing	SEC-HPLC and Tris-Bis PAGE Tris-Bis PAGE Biotinylated Human CD8 alpha on Tris-Bis PAGE under reduced condition. The purity is greater than 95%
Recommend Usage	Biological Activity ELISA SDS-PAGE The optimal working dilution should be determined by the end user.
Storage Buffer	Lyophilized from sterile distilled Water is > 100 ug/mL
Storage Instruction	Store at 2°C to 8°C for 1 week. For long term storage, aliquot and store at -20°C to -80°C. Aliquot to avoid repeated freezing and thawing.
Note	Result of bioactivity analysis

## Applications

- Enzyme-linked Immunoabsorbent Assay

Immobilized Anti-CD8 Antibody, hFc Tag at 0.5 ug/mL (100 uL/well) on the plate. Dose response curve for Biotinylated Human CD8 alpha, His Tag with the EC<sub>50</sub> of 4.8 ng/mL determined by ELISA.

- Functional Study

- SDS-PAGE

## Gene Info — CD8A

Entrez GeneID	<a href="#">925</a>
Protein Accession#	<a href="#">P01732-1</a>
Gene Name	CD8A
Gene Alias	CD8, Leu2, MAL, p32

Gene Description	CD8a molecule
Omim ID	<a href="#">186910 608957</a>
Gene Ontology	<a href="#">Hyperlink</a>
Gene Summary	<p>The CD8 antigen is a cell surface glycoprotein found on most cytotoxic T lymphocytes that mediates efficient cell-cell interactions within the immune system. The CD8 antigen acts as a coreceptor with the T-cell receptor on the T lymphocyte to recognize antigens displayed by an antigen presenting cell (APC) in the context of class I MHC molecules. The coreceptor functions as either a homodimer composed of two alpha chains, or as a heterodimer composed of one alpha and one beta chain. Both alpha and beta chains share significant homology to immunoglobulin variable light chains. This gene encodes the CD8 alpha chain isoforms. Multiple transcript variants encoding different isoforms have been found for this gene. [provided by RefSeq]</p>
Other Designations	<p>CD8 antigen alpha polypeptide CD8 antigen, alpha polypeptide (p32) Leu2 T-lymphocyte antigen OKT8 T-cell antigen T cell co-receptor T-cell antigen Leu2 T-cell surface glycoprotein CD8 alpha chain T-lymphocyte differentiation antigen T8/Leu-2 T8 T-cell ant</p>

## Pathway

- [Antigen processing and presentation](#)
- [Cell adhesion molecules \(CAMs\)](#)
- [Hematopoietic cell lineage](#)
- [Primary immunodeficiency](#)
- [T cell receptor signaling pathway](#)