

Bioactive

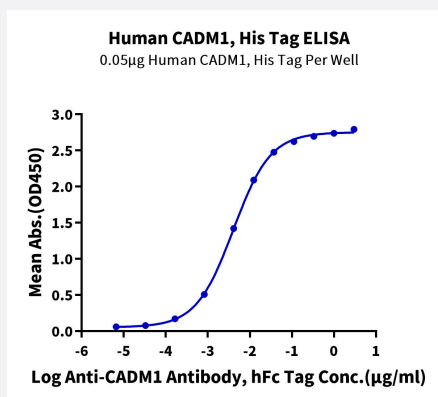
HuPro®

# CADM1 (Human) Recombinant Protein

Catalog # P9801

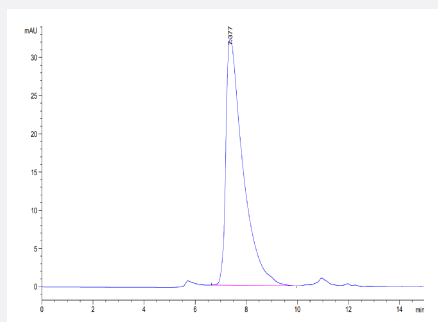
Size 100 ug

## Applications



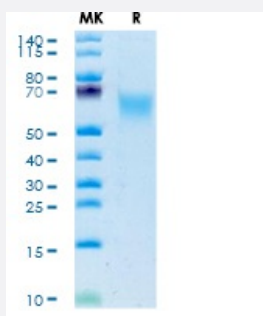
### Enzyme-linked Immunoabsorbent Assay

Immobilized Human CADM1, His Tag at 0.5 ug/mL (100 uL/well) on the plate. Dose response curve for Anti-CADM1 Antibody, hFc Tag with the EC<sub>50</sub> of 4.0 g/mL determined by ELISA.



### SEC-HPLC

The purity of Human CADM1 is greater than 95% as determined by SEC-HPLC.



### Tris-Bis PAGE

Human CADM1 on Tris-Bis PAGE under reduced condition. The purity is greater than 95%.

## Specification

Product Description	Human CADM1 (Q9BY67-1, Gln45-His374) partial recombinant protein with His tag at C-terminus expressed in HEK293 cells.
Sequence	Gln45-His374
Host	Human
Theoretical MW (kDa)	38
Form	Lyophilized
Preparation Method	Mammalian cell (HEK293) expression system
Purity	> 95% as determined by Tris-Bis PAGE; > 95% as determined by HPLC
Endotoxin Level	< 1 EU per 1 ug of protein (determined by LAL method)
Activity	The EC <sub>50</sub> was 4.0 g/mL, measured by ELISA at 0.5 ug/mL.
Quality Control Testing	SEC-HPLC and Tris-Bis PAGE SEC-HPLC The purity of Human CADM1 is greater than 95% as determined by SEC-HPLC. Tris-Bis PAGE Human CADM1 on Tris-Bis PAGE under reduced condition. The purity is greater than 95%.
Recommend Usage	Biological Activity ELISA SDS-PAGE The optimal working dilution should be determined by the end user.
Storage Buffer	Lyophilized from sterile distilled Water is > 100 ug/mL
Storage Instruction	Store at 2°C to 8°C for 1 week. For long term storage, aliquot and store at -20°C to -80°C. Aliquot to avoid repeated freezing and thawing.
Note	Result of bioactivity analysis

## Applications

- Enzyme-linked Immunoabsorbent Assay

Immobilized Human CADM1, His Tag at 0.5 ug/mL (100 uL/well) on the plate. Dose response curve for Anti-CADM1 Antibody, hFc Tag with the EC<sub>50</sub> of 4.0 g/mL determined by ELISA.

- Functional Study

- SDS-PAGE

## Gene Info — CADM1

Entrez GeneID	<a href="#">23705</a>
Protein Accession#	<a href="#">Q9BY67-1</a>
Gene Name	CADM1
Gene Alias	BL2, DKFZp686F1789, IGSF4, IGSF4A, MGC149785, MGC51880, NECL2, Nect-2, RA175, ST17, SYNCAM, TSLC1, sTSLC-1, sgIGSF, synCAM1
Gene Description	cell adhesion molecule 1
Omim ID	<a href="#">605686</a>
Gene Ontology	<a href="#">Hyperlink</a>
Gene Summary	member 4 immunoglobulin superfamily
Other Designations	TSLC1/Nectin-like 2 IGSF4 immunoglobulin superfamily, member 4 immunoglobulin superfamily, member 4D nectin-like 2 nectin-like protein 2 tumor suppressor in lung cancer 1

## Pathway

- [Cell adhesion molecules \(CAMs\)](#)

## Disease

- [Cardiovascular Diseases](#)
- [Crohn Disease](#)
- [Diabetes Mellitus](#)
- [Edema](#)
- [Genetic Predisposition to Disease](#)
- [Narcolepsy](#)
- [Tobacco Use Disorder](#)