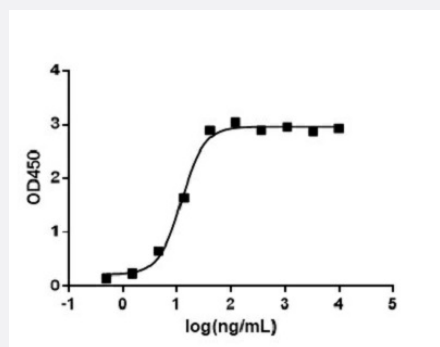


Bioactive

ACE2(Human) Recombinant Protein

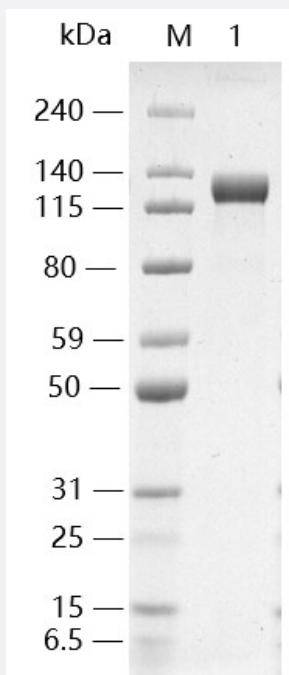
Catalog # P7399 Size 1 mg

Applications



Result of activity analysis

Result of activity analysis



Result of activity analysis

Result of activity analysis

Specification

Product Description

Human ACE2 (Q9BYF1, 18 a.a. - 740 a.a.) partial recombinant protein expressed in CHO cells.

Sequence

QSTIEEQAKTFLDKFNHEAEDLFYQSSLASWNYNTNITEENVQNMNNAGDKWSAFLKEQSTLAQ
 MYPLQEIQNLTVKLQLQALQQNGSSVLSEDKSKRLNTILNTMSTIYSTGKVCNPDNPQECLLLEPG
 LNEIMANSLDYNERLWAWESWRSEVGKQLRPLYEEYVVLKNEMARANHYEDYGDYWRGDYEVN
 GVDGYDYSRGLIEDVEHTFEEIKPLYEHLHAYVRAKLMNAYPSYISPIGCLPAHLLGDMWGRFWT
 NLYSLTVPFGQKPNIDVTDAMVDQAWDAQRIFKEAEKFFVSVGLPNMTQGFWENSMLTDPGNV
 QKAVCHPTAWDLGKGDFRILMCTKVTMDDFLTAHHEMGGHIQYDMAAAAQPFLLRNGANEGFHEA
 VGEIMSLSAATPKHLKSIGLLSPDFQEDNETEINFLLKQALTVGTLPTMLEKWRWMMVFKGEIPK
 DQWMKWWEMKREIVGVPEVPHDETYCDPASLFHVSNDYSFIRYYTRTLYQFQFQEALCQAAK
 HEGPLHKCDISNSTEAGQKLFNMLRLGKSEPWTALENVVGAKNMNRPLLNIFEPLFTWLKDKQ
 NKNSFVGWSTDWSPYADQSIKVRISLKSALGDKAYEWNENMYLFRSSVAYAMRQYFLKVKVKNQM
 ILFGCEEDVRVANLKPRISFNFFVTAPKNVSDIIPRTEVEKAIRMSRSRINDAFRLNDNSLEFLGIQPTL
 GPPNQPPVS

Host	Mammals
Theoretical MW (kDa)	110.5
Form	Liquid
Preparation Method	Mammalian cell (CHO) expression system
Purity	> 95% as analyzed by SDS-PAGE.
Endotoxin Level	< 0.1 EU/ ug of protein (gel clotting method)
Activity	Human (CHO-expressed) can bind with S-RBD in functional ELISA assay.
Storage Buffer	In PBS, pH 7.4.
Storage Instruction	Store at -20°C or below for 6 months. Aliquot to avoid repeated freezing and thawing.
Note	Result of activity analysis Result of activity analysis Result of activity analysis

Applications

- Functional Study
- SDS-PAGE

Gene Info — ACE2

Entrez GeneID [59272](https://www.ncbi.nlm.nih.gov/entrez/query.fcgi?cmd=Retrieve&db=Gene&list_uids=59272)

Protein Accession#	Q9BYF1
Gene Name	ACE2
Gene Alias	ACEH, DKFZp434A014
Gene Description	angiotensin I converting enzyme (peptidyl-dipeptidase A) 2
Omim ID	300335
Gene Ontology	Hyperlink
Gene Summary	<p>The protein encoded by this gene belongs to the angiotensin-converting enzyme family of dipeptidyl carboxydipeptidases and has considerable homology to human angiotensin 1 converting enzyme. This secreted protein catalyzes the cleavage of angiotensin I into angiotensin 1-9, and angiotensin II into the vasodilator angiotensin 1-7. The organ- and cell-specific expression of this gene suggests that it may play a role in the regulation of cardiovascular and renal function, as well as fertility. In addition, the encoded protein is a functional receptor for the spike glycoprotein of the human coronaviruses SARS and HCoV-NL63. [provided by RefSeq]</p>
Other Designations	ACE-related carboxypeptidase OTTHUMP00000022963 angiotensin I converting enzyme 2 angiotensin converting enzyme-like protein

Pathway

- [Renin-angiotensin system](#)

Disease

- [Arrhythmias](#)
- [Atrial Fibrillation](#)
- [Cardiomyopathy](#)
- [Cardiovascular Diseases](#)
- [Coronary Disease](#)
- [Death](#)
- [Diabetes Mellitus](#)
- [Diabetic Nephropathies](#)
- [Disease Progression](#)

- [Edema](#)
- [Genetic Predisposition to Disease](#)
- [Hypertension](#)
- [Hypertrophy](#)
- [Hypotension](#)
- [Intracranial Aneurysm](#)
- [Malaria](#)
- [Metabolic Syndrome X](#)
- [Sarcoidosis](#)