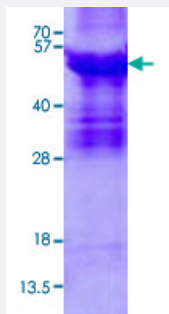


Full-Length

ABI3 (Human) Recombinant Protein

Catalog # P5871 Size 20 ug

Applications



Specification

Product Description	Human ABI3 (NP_057512, 1 a.a. - 366 a.a.) full-length recombinant protein with His tag expressed in <i>Escherichia coli</i> .
Sequence	MGSSHHHHHSSGLVPRGSHMGMAELQQLQEFIEPTGREALRGNHSALLRVADYCEDNYVQATDKRKALEETMAFTTQALASVAYQVGNLAGHTLRMLDLQGAALRQVEARVSTLGQMVNMHMEKVARREIGTLATVQRLPPGQKVIAPENLPPLTPYCRRLNFGCLDDIGHGKDLSTQLSRTGTL SRKSIKAPATPASATLGRPPRIPEPVHLPVVPDGRLSAASSASSLASAGSAEGVGGAPTPKGQAAPPAPPLPSSLDPPPPPAAVEVFQRPPTLEELSPPPPDEELPLPLDLPPPPPLDGDELGLPPPPPGFGPDEPSWVPASYLEKVVTLPYTSQKDNELSFSEGTVICVTRRYS DGWCEGVSSEGTGFFPGNYVEPSC
Host	<i>Escherichia coli</i>
Theoretical MW (kDa)	41.4
Form	Liquid
Preparation Method	<i>Escherichia coli</i> expression system
Purity	> 85% by SDS - PAGE
Quality Control Testing	3 ug/lane in 15% SDS-PAGE Stained with Coomassie Blue. Due to the protein nature, dimmers and multimers may be observed.

Storage Buffer

In 20 mM Tris-HCl buffer, pH 8.0 (0.4 M Urea, 10% glycerol).

Storage Instruction

Store at 2°C to 8°C for 1 week. For long term storage, aliquot and store at -20°C to -80°C.
Aliquot to avoid repeated freezing and thawing.

Applications

- SDS-PAGE

Gene Info — ABI3

Entrez GeneID[51225](#)**Gene Name**

ABI3

Gene Alias

NESH, SSH3BP3

Gene Description

ABI family, member 3

Omim ID[606363](#)**Gene Ontology**[Hyperlink](#)**Gene Summary**

This gene encodes a member of an adaptor protein family. Members of this family encode proteins containing a homeobox homology domain, proline rich region and Src-homology 3 (SH3) domain, and are components of the Abi/WAVE complex which regulates Rac-dependent actin polymerization. The encoded protein inhibits ectopic metastasis of tumor cells as well as cell migration. This may be accomplished through interaction with p21-activated kinase. [provided by RefSeq]

Other Designations

ABI gene family, member 3|NESH protein|new molecule including SH3