

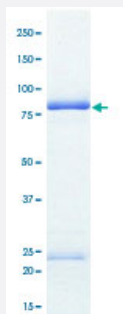
Bioactive

Full-Length

# YES1 (Human) Recombinant Protein

Catalog # P5811      Size 5 ug

## Applications



## Result of activity analysis

Result of activity analysis

□

## Specification

<b>Product Description</b>	Human YES1 (NP_005424.1, 1 a.a. - 543 a.a.) full-length recombinant protein with GST tag expressed in Baculovirus infected Sf21 cells.
<b>Host</b>	insect
<b>Theoretical MW (kDa)</b>	88
<b>Form</b>	Liquid
<b>Preparation Method</b>	Baculovirus infected insect cell (Sf21) expression system
<b>Purification</b>	Glutathione sepharose chromatography
<b>Purity</b>	79 % by SDS-PAGE/CBB staining

<b>Activity</b>	The activity was measured by off-chip mobility shift assay. The enzyme was incubated with fluorescence-labeled substrate and Mg(or Mn)/ATP. The phosphorylated and unphosphorylated substrates were separated and detected by LabChip3000. Substrate : Src tide. ATP: 100 $\mu$ M.
<b>Quality Control Testing</b>	SDS-PAGE Stained with Coomassie Blue
<b>Storage Buffer</b>	In 50 mM Tris-HCl, 150 mM NaCl, pH 7.5 (0.05% Brij35, 1 mM DTT, 10% glycerol)
<b>Storage Instruction</b>	Store at -80°C. Aliquot to avoid repeated freezing and thawing.
<b>Note</b>	Result of activity analysis Result of activity analysis

## Applications

- Functional Study
- SDS-PAGE

## Gene Info — YES1

<b>Entrez GeneID</b>	<a href="#">7525</a>
<b>Protein Accession#</b>	<a href="#">NP_005424.1</a>
<b>Gene Name</b>	YES1
<b>Gene Alias</b>	HsT441, P61-YES, Yes, c-yes
<b>Gene Description</b>	v-yes-1 Yamaguchi sarcoma viral oncogene homolog 1
<b>Omim ID</b>	<a href="#">164880</a>
<b>Gene Ontology</b>	<a href="#">Hyperlink</a>
<b>Gene Summary</b>	This gene is the cellular homolog of the Yamaguchi sarcoma virus oncogene. The encoded protein has tyrosine kinase activity and belongs to the src family of proteins. This gene lies in close proximity to thymidylate synthase gene on chromosome 18, and a corresponding pseudogene has been found on chromosome 22. [provided by RefSeq]
<b>Other Designations</b>	OTTHUMP00000162194 Yamaguchi sarcoma oncogene cellular yes-1 protein proto-oncogene tyrosine-protein kinase YES viral oncogene yes-1 homolog 1

## Pathway

- [Adherens junction](#)
- [Tight junction](#)

## Disease

- [Celiac Disease](#)
- [Genetic Predisposition to Disease](#)
- [HIV Infections](#)