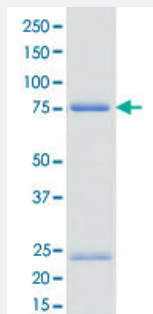


Bioactive

# AXL (Human) Recombinant Protein

Catalog # P5687      Size 5 ug

## Applications



## Result of activity analysis

Result of activity analysis

□

## Specification

<b>Product Description</b>	Human AXL (NP_001690.2, 464 a.a. - 885 a.a.) partial recombinant protein with GST tag expressed in Baculovirus infected Sf21 cells.
<b>Host</b>	insect
<b>Theoretical MW (kDa)</b>	74
<b>Form</b>	Liquid
<b>Preparation Method</b>	Baculovirus expression system
<b>Purification</b>	Glutathione sepharose chromatography
<b>Purity</b>	66 % by SDS-PAGE/CBB staining.

<b>Activity</b>	The activity was measured by off-chip mobility shift assay. The enzyme was incubated with fluorescence-labeled substrate and Mg (or Mn)/ATP. The phosphorylated and unphosphorylated substrates were separated and detected by LabChip™3000. Substrate : CSKtide. ATP: 100 μM.
<b>Quality Control Testing</b>	Loading 1 ug protein in SDS-PAGE
<b>Storage Buffer</b>	In 50 mM Tris-HCl, 150 mM NaCl, pH 7.5 (0.05% Brij35, 1 mM DTT, 10% glycerol)
<b>Storage Instruction</b>	Store at -80°C. Aliquot to avoid repeated freezing and thawing.
<b>Note</b>	Result of activity analysis Result of activity analysis

## Applications

- Functional Study
- SDS-PAGE

## Gene Info — AXL

<b>Entrez GeneID</b>	<a href="#">558</a>
<b>Protein Accession#</b>	<a href="#">NP_001690.2</a>
<b>Gene Name</b>	AXL
<b>Gene Alias</b>	JTK11, UFO
<b>Gene Description</b>	AXL receptor tyrosine kinase
<b>Omim ID</b>	<a href="#">109135</a>
<b>Gene Ontology</b>	<a href="#">Hyperlink</a>
<b>Gene Summary</b>	The protein encoded by this gene is a member of the receptor tyrosine kinase subfamily. Although it is similar to other receptor tyrosine kinases, this protein represents a unique structure of the extracellular region that juxtaposes IgL and FNIII repeats. It transduces signals from the extracellular matrix into the cytoplasm by binding growth factors like vitamin K-dependent protein growth-arrest-specific gene 6. It is involved in the stimulation of cell proliferation and can also mediate cell aggregation by homophilic binding. Alternatively spliced transcript variants encoding different isoforms have been identified. [provided by RefSeq]
<b>Other Designations</b>	AXL transforming sequence/gene oncogene AXL

## Disease

- [Cardiovascular Diseases](#)
- [Carotid Artery Diseases](#)
- [Diabetes Mellitus](#)
- [Edema](#)
- [Genetic Predisposition to Disease](#)
- [Stroke](#)