

Bioactive

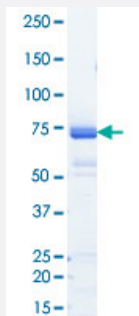
Full-Length

CAMK2D (Human) Recombinant Protein

Catalog # P5506

Size 5 ug

Applications



Result of activity analysis

Result of activity analysis

□

Specification

Product Description	Human CAMK2D (NP_742113.1, 1 a.a. - 478 a.a.) full-length recombinant protein with GST tag expressed in baculovirus infected Sf21 cells.
Host	insect
Theoretical MW (kDa)	81
Form	Liquid
Preparation Method	Baculovirus infected insect cell (Sf21) expression system
Purification	Glutathione sepharose chromatography
Purity	82 % by SDS-PAGE/CBB staining

Activity	The activity was measured by off-chip mobility shift assay. The enzyme was incubated with fluorescence-labeled substrate, Mg(or Mn)/ATP, and Ca/Calmodulin. The phosphorylated and unphosphorylated substrates were separated and detected by LabChip TM3000. Substrate: GS peptide. ATP: 100 uM.
Quality Control Testing	Loading 1 ug protein in SDS-PAGE
Storage Buffer	In 50 mM Tris-HCl, 150 mM NaCl, pH 7.5 (0.1% CHAPS, 1 mM DTT, 10% glycerol)
Storage Instruction	Store at -80°C. Aliquot to avoid repeated freezing and thawing.
Note	Result of activity analysis Result of activity analysis

Applications

- Functional Study
- SDS-PAGE

Gene Info — CAMK2D

Entrez GeneID	817
Protein Accession#	NP_742113.1
Gene Name	CAMK2D
Gene Alias	CAMKD, DKFZp686G23119, DKFZp686I2288, MGC44911
Gene Description	calcium/calmodulin-dependent protein kinase II delta
Omim ID	607708
Gene Ontology	Hyperlink
Gene Summary	The product of this gene belongs to the serine/threonine protein kinase family and to the Ca(2+)/calmodulin-dependent protein kinase subfamily. Calcium signaling is crucial for several aspects of plasticity at glutamatergic synapses. In mammalian cells, the enzyme is composed of four different chains: alpha, beta, gamma, and delta. The product of this gene is a delta chain. Alternative splicing results in multiple transcript variants encoding distinct isoforms. Distinct isoforms of this chain have different expression patterns

Other Designations

CaM kinase II delta subunit|CaM-kinase II delta chain|CaMK-II delta subunit|OTTHUMP00000163829|OTTHUMP00000163830|calcium/calmodulin-dependent protein kinase (CaM kinase) II delta|calcium/calmodulin-dependent protein kinase type II delta chain

Pathway

- [Calcium signaling pathway](#)
- [ErbB signaling pathway](#)
- [Glioma](#)
- [GnRH signaling pathway](#)
- [Long-term potentiation](#)
- [Melanogenesis](#)
- [Neurotrophin signaling pathway](#)
- [Olfactory transduction](#)
- [Wnt signaling pathway](#)

Disease

- [Alcoholism](#)
- [Genetic Predisposition to Disease](#)
- [Mucocutaneous Lymph Node Syndrome](#)
- [Tobacco Use Disorder](#)