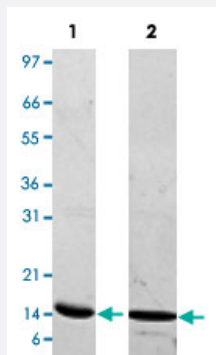


Bioactive

Lep (Rat) Recombinant Protein

Catalog # P4847 Size 1 mg

Applications



Lane 1: non-reducing conditions

Lane 2: reducing conditions

Result of activity analysis

Result of activity analysis

Serial dilutions of rat Lep were added to Baf/3 cells. After 44 hours cell proliferation was measured and the linear portion of the curve was used to determine the ED50.

Specification

Product Description	Rat Lep recombinant protein expressed in <i>Escherichia coli</i> .
Sequence	MVPIHKVQDDTKTIKTVTRINDISHTQSVSARQRTGLDFIPGLHPILSLSKMDQTLAVYQQILTSLP SQNVLQIAHDLENLRDLLHLLAFSKSCSLPQTRGLQKPESLDGVLEASLYSTEVVALSRLQGSLQ DILQQDLDSPEC
Host	<i>Escherichia coli</i>
Theoretical MW (kDa)	16.2
Form	Lyophilized
Preparation Method	<i>Escherichia coli</i> expression system

Endotoxin Level	< 0.1 EU/ug
Activity	The activity is determined by the leptin-dependent stimulation of mouse BaF3 indicator cells. The expected ED ₅₀ for this effect is 4-6.7 ng/mL.
Quality Control Testing	1 ug/lane in 4-20% Tris-Glycine gel stained with Coomassie Blue Lane 1: non-reducing conditions Lane 2: reducing conditions
Storage Buffer	Lyophilized from 0.1% TFA
Storage Instruction	Store at -20°C on dry atmosphere. After reconstitution with sterilized water, store at -20°C. Aliquot to avoid repeated freezing and thawing.
Note	Result of activity analysis Result of activity analysis Serial dilutions of rat Lep were added to Baf/3 cells. After 44 hours cell proliferation was measured and the linear portion of the curve was used to determine the ED50.

Applications

- Functional Study
- SDS-PAGE

Gene Info — Lep

Entrez GeneID	25608
Protein Accession#	P50596
Gene Name	Lep
Gene Alias	OB, obese
Gene Description	leptin
Gene Ontology	Hyperlink
Gene Summary	leptin)
Other Designations	Obesity (murine homolog, leptin)