

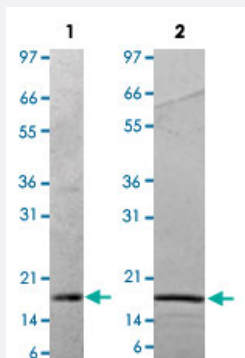
Bioactive

IL1b (Rat) Recombinant Protein

Catalog # P4841

Size 10 ug

Applications



Lane 1: non-reducing conditions

Lane 2: reducing conditions

Specification

Product Description

Rat IL1b recombinant protein expressed in *Escherichia coli*.

Sequence

MVIPRLHCRLRDEQQKCLVLSDPCELKALHLNGQNISQQVVFMSFVQGETSNDKIPVALGLKG
LNLYLSCVMKDGTPTLQLESVDPKQYPKKKMEKRFFVNKIEVKTKVEFESAQFPNWYISTSQAEH
RPVFLGNSNGRDIVDFTMEPVSS

Host

Escherichia coli

Theoretical MW (kDa)

17.3

Form

Lyophilized

Preparation Method

Escherichia coli expression system

Endotoxin Level

< 0.1 EU/ug

Activity

Recombinant rat IL1b is fully biologically active when compared to a standard. The ED₅₀, as determined by the dose-dependent proliferation of mouse D10S cells, is 40.2 pg/mL.

Quality Control Testing

1 ug/lane in 4-20% Tris-Glycine gel stained with Coomassie Blue
Lane 1: non-reducing conditions
Lane 2: reducing conditions

Storage Buffer

Lyophilized from 10 mM NaP, pH 7.5

Storage Instruction

Store at -20°C on dry atmosphere.
After reconstitution with sterilized water, store at -20°C.
Aliquot to avoid repeated freezing and thawing.

Applications

- Functional Study
- SDS-PAGE

Gene Info — Il1b

Entrez GeneID[24494](#)**Protein Accession#**[Q63264](#)**Gene Name**

Il1b

Gene Alias

-

Gene Description

interleukin 1 beta

Gene Ontology[Hyperlink](#)**Gene Summary**

beta

Other Designations

interleukin 1, beta