

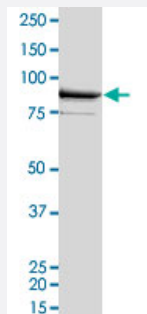
Bioactive

Full-Length

# YES1 (Human) Recombinant Protein

Catalog # P4797      Size 100 ug

## Applications



## Result of activity analysis

Result of activity analysis

## Specification

<b>Product Description</b>	Human YES1 (NM_005433, 1 a.a. - 543 a.a.) full-length recombinant protein with GST-His tag expressed in Sf9 cells.
<b>Host</b>	insect
<b>Theoretical MW (kDa)</b>	90.997
<b>Form</b>	Liquid
<b>Preparation Method</b>	Insect cell (Sf9) expression system
<b>Purification</b>	One-step affinity purification using GSH-agarose
<b>Concentration</b>	0.116 ug/uL

Activity	29 pmol/ug x min
Quality Control Testing	2 ug/lane SDS-PAGE Stained with Coomassie Blue
Storage Buffer	In 50 mM Tris-HCl, 100 mM NaCl, pH 8.0 (5 mM DTT, 4 mM reduced glutathione, 20% glycerol)
Storage Instruction	Store at -80°C. Aliquot to avoid repeated freezing and thawing
Note	Result of activity analysis Result of activity analysis

## Applications

- Functional Study
- SDS-PAGE

## Gene Info — YES1

Entrez GeneID	<a href="#">7525</a>
Protein Accession#	<a href="#">NM_005433</a>
Gene Name	YES1
Gene Alias	HsT441, P61-YES, Yes, c-yes
Gene Description	v-yes-1 Yamaguchi sarcoma viral oncogene homolog 1
Omim ID	<a href="#">164880</a>
Gene Ontology	<a href="#">Hyperlink</a>
Gene Summary	This gene is the cellular homolog of the Yamaguchi sarcoma virus oncogene. The encoded protein has tyrosine kinase activity and belongs to the src family of proteins. This gene lies in close proximity to thymidylate synthase gene on chromosome 18, and a corresponding pseudogene has been found on chromosome 22. [provided by RefSeq]
Other Designations	OTTHUMP00000162194 Yamaguchi sarcoma oncogene cellular yes-1 protein proto-oncogene tyrosine-protein kinase YES viral oncogene yes-1 homolog 1

## Pathway

- [Adherens junction](#)
- [Tight junction](#)

## Disease

- [Celiac Disease](#)
- [Genetic Predisposition to Disease](#)
- [HIV Infections](#)