

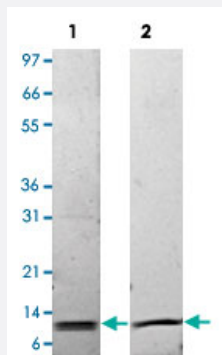
Bioactive

IL31 (Mouse) Recombinant Protein

Catalog # P4632

Size 10 ug

Applications



Lane 1: non-reducing conditions

Lane 2: reducing conditions

Result of activity analysis

Result of activity analysis

Human PBMCs were cultured with 0 to 1000 ng/mL mouse IL31. Human IL-8 production was measured after 48 hours and the linear portion of the curve was used to calculate the ED50.

Specification

Product Description	Mouse IL31 (Q6EAL8) recombinant protein expressed in <i>Escherichia coli</i> .
Sequence	MTCSLSFGAPISKEDLRTTIDLLKQESQDLYNNYSIKQASGMSADESIQLPCFSLDREALTNISVIAH LEKVKVLSSENTVDTSWVIRWLTNISCFNPLNLNISVPGNTDESYDCKVFVLTVLKQFSNCMAELQA KDNTTC
Host	<i>Escherichia coli</i>
Theoretical MW (kDa)	15.7
Form	Lyophilized
Preparation Method	<i>Escherichia coli</i> expression system

Endotoxin Level	< 0.1 EU/ug
Activity	The activity is determined by the dose dependent production of IL-8 by human PBMCs. The expected ED ₅₀ for this effect is 16-24 pg/mL.
Quality Control Testing	1 ug/lane in 4-20% Tris-Glycine gel Stained with Coomassie Blue Lane 1: non-reducing conditions Lane 2: reducing conditions
Storage Buffer	Lyophilized with 10 mM Na ₂ PO ₄ , pH 7.5.
Storage Instruction	Store at -20°C on dry atmosphere. After reconstitution with sterilized water, store at -20°C. Aliquot to avoid repeated freezing and thawing.
Note	Result of activity analysis Result of activity analysis Human PBMCs were cultured with 0 to 1000 ng/mL mouse Il31. Human IL-8 production was measured after 48 hours and the linear portion of the curve was used to calculate the ED50.

Applications

- Functional Study
- SDS-PAGE

Gene Info — Il31

Entrez GeneID	76399
Protein Accession#	Q6EAL8
Gene Name	Il31
Gene Alias	1700013B14Rik
Gene Description	interleukin 31
Gene Ontology	Hyperlink
Other Designations	-