

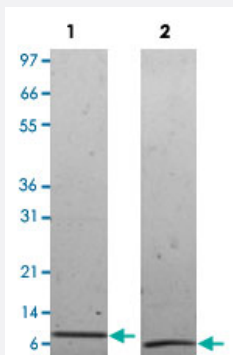
Bioactive

Ccl8 (Mouse) Recombinant Protein

Catalog # P4626

Size 20 ug

Applications



Lane 1: non-reducing conditions

Lane 2: reducing conditions

Result of activity analysis

Result of activity analysis

Human THP-1 cells were allowed to migrate to mouse Ccl8 at (0, 0.1, 1, and 10ng/mL). After 45 minutes, cells that migrated were counted using a luminescent substrate and displayed on the bar graph above.

Specification

Product Description	Mouse Ccl8 (Q9Z121) recombinant protein expressed in <i>Escherichia coli</i> .
Sequence	GPDKAPVTCCFHV LKLKLIPLRV LKSYERINNIQCPMEAVVFQTKQGMSLCVDPTQKWWSEYMEILDQKSQILQP
Host	<i>Escherichia coli</i>
Theoretical MW (kDa)	8.5
Form	Lyophilized
Preparation Method	<i>Escherichia coli</i> expression system
Endotoxin Level	< 0.1 EU/ug

Activity	The activity is determined by the ability to chemoattract THP-1 cells and is detectable starting at 0.1 ng/mL.
Quality Control Testing	1 ug/lane in 4-20% Tris-Glycine gel Stained with Coomassie Blue Lane 1: non-reducing conditions Lane 2: reducing conditions
Storage Buffer	No additive
Storage Instruction	Store at -20°C on dry atmosphere. After reconstitution with sterilized water, store at -20°C. Aliquot to avoid repeated freezing and thawing.
Note	Result of activity analysis Result of activity analysis Human THP-1 cells were allowed to migrate to mouse Ccl8 at (0, 0.1, 1, and 10ng/mL). After 45 minutes, cells that migrated were counted using a luminescent substrate and displayed on the bar graph above.

Applications

- Functional Study
- SDS-PAGE

Gene Info — Ccl8

Entrez GeneID	20307
Protein Accession#	Q9Z121
Gene Name	Ccl8
Gene Alias	1810063B20Rik, AB023418, HC14, MCP-2, Mcp2, Scya8
Gene Description	chemokine (C-C motif) ligand 8
Gene Ontology	Hyperlink
Other Designations	OTTMUSP00000000873 monocyte chemoattractant protein-2 small inducible cytokine A8