

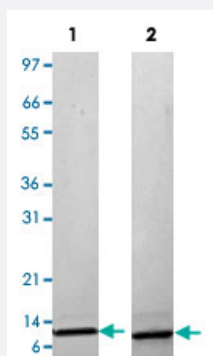
Bioactive

## CCL13 (Human) Recombinant Protein

Catalog # P4425

Size 20 ug

### Applications



Lane 1: non-reducing conditions

Lane 2: reducing conditions

### Result of activity analysis

Result of activity analysis

Human THP-1 cells were allowed to migrate to human CCL13 at (0, 0.1, 1, 10, 100 and 1000 ng/mL). After 45 minutes, cells that migrated were counted using a luminescent substrate and displayed on the bar graph above.

### Specification

Product Description	Human CCL13 (Q99616) recombinant protein expressed in <i>Escherichia coli</i> .
Sequence	QPDALNVPSTCCFTFSSKKISLQRLKSYVITTSRCPQKAVIFRTLKGKEICADPKEKWWQNYMKHLGRKAHTLKT
Host	<i>Escherichia coli</i>
Theoretical MW (kDa)	8.5
Form	Lyophilized
Preparation Method	<i>Escherichia coli</i> expression system
Endotoxin Level	< 0.1 EU/ug

Activity	The activity is determined by the ability of MCP-4 to chemoattract human THP-1 cells and is detectable starting at 1 ug/mL.
Quality Control Testing	1 ug/lane in 4-20% Tris-Glycine gel Stained with Coomassie Blue Lane 1: non-reducing conditions Lane 2: reducing conditions
Storage Buffer	No additive
Storage Instruction	Store at -20°C on dry atmosphere. After reconstitution with sterilized water, store at -20°C or lower. Aliquot to avoid repeated freezing and thawing.
Note	Result of activity analysis Result of activity analysis Human THP-1 cells were allowed to migrate to human CCL13 at (0, 0.1, 1, 10, 100 and 1000 ng/mL) . After 45 minutes, cells that migrated were counted using a luminescent substrate and displayed on the bar graph above.

## Applications

- Functional Study
- SDS-PAGE

## Gene Info — CCL13

Entrez GeneID	<a href="#">6357</a>
Protein Accession#	<a href="#">Q99616</a>
Gene Name	CCL13
Gene Alias	CKb10, MCP-4, MGC17134, NCC-1, NCC1, SCYA13, SCYL1
Gene Description	chemokine (C-C motif) ligand 13
Omim ID	<a href="#">601391</a>
Gene Ontology	<a href="#">Hyperlink</a>

**Gene Summary**

This gene is one of several Cys-Cys (CC) cytokine genes clustered on the q-arm of chromosome 17. Cytokines are a family of secreted proteins involved in immunoregulatory and inflammatory processes. The CC cytokines are proteins characterized by two adjacent cysteines. The cytokine encoded by this gene displays chemotactic activity for monocytes, lymphocytes, basophils and eosinophils, but not neutrophils. This chemokine plays a role in accumulation of leukocytes during inflammation. It may also be involved in the recruitment of monocytes into the arterial wall during atherosclerosis. [provided by RefSeq]

**Other Designations**

CK-beta-10|monocyte chemoattractant protein 4|monocyte chemotactic protein 4|new CC chemokine 1|small inducible cytokine A13|small inducible cytokine subfamily A (Cys-Cys), member 13

**Pathway**

- [Chemokine signaling pathway](#)
- [Cytokine-cytokine receptor interaction](#)

**Disease**

- [Arthritis](#)
- [Asthma](#)
- [Birth Weight](#)
- [Bronchiolitis](#)
- [Encephalomyelitis](#)
- [Genetic Predisposition to Disease](#)
- [Glioblastoma](#)
- [Glioma](#)
- [HIV Infections](#)
- [Infant](#)
- [Leukemia](#)
- [Meningeal Neoplasms](#)
- [Meningioma](#)
- [Multiple Sclerosis](#)

- [Ovarian Neoplasms](#)
- [Respiratory Syncytial Virus Infections](#)