

Bioactive

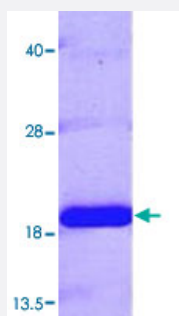
Full-Length

PPIL1 (Human) Recombinant Protein

Catalog # P3473

Size 100 ug

Applications



Specification

| | |
|-----------------------------|--|
| Product Description | Human PPIL1 (NP_057143, 1 a.a. - 166 a.a.) full-length recombinant protein with His tag expressed in <i>Escherichia coli</i> . |
| Sequence | MAAIPDWSQPPNVYLETSMGIVLELYWKHAPKTCKNFAELARRGYNGTKFHRIKDFMIQGGDP TGTGRGGASIYGKQFEDELHPDLKFTGAGILAMANAGPDTNGSQFFVTLAPTQWLDGKHTIFGRV CQGIGMVNRVGMVETNSQDRPVDDVKIIKAYPSGLEHHHHHH |
| Host | <i>Escherichia coli</i> |
| Theoretical MW (kDa) | 19.3 |
| Form | Liquid |
| Preparation Method | <i>Escherichia coli</i> expression system |
| Purification | Conventional Chromatography |
| Concentration | 1 mg/mL |
| Purity | > 95% by SDS-PAGE |
| Activity | Specific activity is > 300 nmoles/min/ug, and is defined as the amount of enzyme that cleaves 1umol e of suc-AAFP-pNA per minute at 25°C in Tris-HCl pH 8.0 using chymotrypsin. |

| | |
|-------------------------|---|
| Quality Control Testing | Loading 3 ug protein in 15% SDS-PAGE |
| Storage Buffer | In 20 mM Tris-HCl, pH 8.0 (20% glycerol). |
| Storage Instruction | Store at 2°C to 8°C for 1 week. For long term storage, aliquot and store at -20°C to -80°C. Aliquot to avoid repeated freezing and thawing. |

Applications

- Functional Study
- SDS-PAGE

Gene Info — PPIL1

| | |
|--------------------|---|
| Entrez GeneID | 51645 |
| Protein Accession# | NP_057143 |
| Gene Name | PPIL1 |
| Gene Alias | CGI-124, CYPL1, MGC678, PPlase, hCyPX |
| Gene Description | peptidylprolyl isomerase (cyclophilin)-like 1 |
| Omim ID | 601301 |
| Gene Ontology | Hyperlink |
| Gene Summary | This gene is a member of the cyclophilin family of peptidylprolyl isomerases (PPlases). The cyclophilins are a highly conserved, ubiquitous family, members of which play an important role in protein folding, immunosuppression by cyclosporin A, and infection of HIV-1 virions. Based on similarity to other PPlases, this protein could accelerate the folding of proteins and might catalyze the cis-trans isomerization of proline imidic peptide bonds in oligopeptides. [provided by RefSeq] |
| Other Designations | OTTHUMP00000016310 cyclophilin-related gene 1 peptidyl-prolyl cis-trans isomerase peptidylprolyl isomerase-like 1 rotamase |