

Bioactive

CellTx™

HuPro®

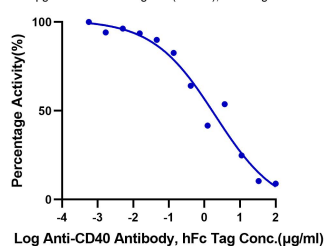
CD40LG (Human) Recombinant Protein

Catalog # P10107

Size 100 ug

Applications

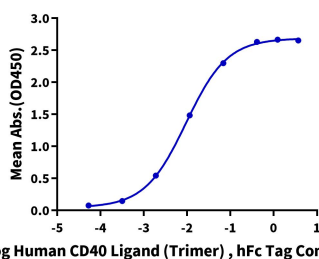
Inhibition of Human CD40 Ligand (Trimer) and CD40 Binding
0.5µg Human CD40 Ligand (Trimer), hFc Tag Per Well



Inhibition Assay

Serial dilutions of Anti-CD40 Antibody were added into Biotinylated Human CD40, His Tag : Human CD40 Ligand (Trimer) , hFc Tag binding reactions. The half maximal inhibitory concentration (IC50) is 2.0µg/ml.

Human CD40 Ligand (Trimer) , hFc Tag ELISA
0.1µg Human CD40, His Tag Per Well

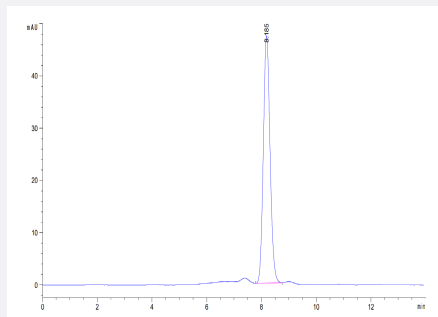


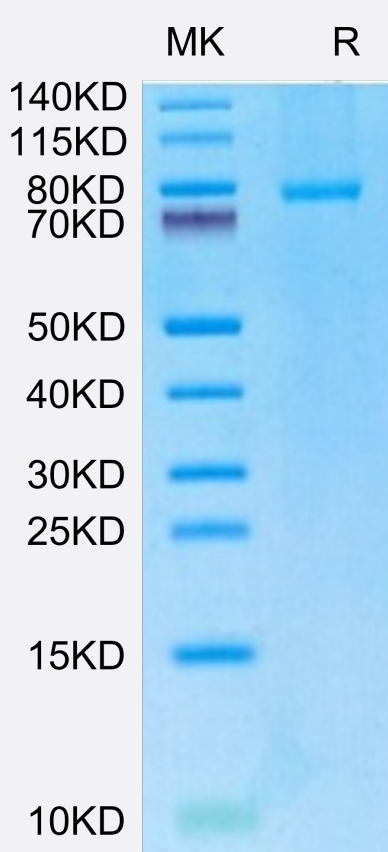
ELISA

Immobilized Human CD40, His Tag at 1µg/ml (100ul/Well) on the plate. Dose response curve for Human CD40 Ligand (Trimer) , hFc Tag with the EC50 of 9.0ng/ml determined by ELISA (QC Test).

SEC-HPLC

The purity of Human CD40 Ligand (Trimer) is greater than 95% as determined by SEC-HPLC.





Tris-Bis PAGE

Human CD40 Ligand (Trimer) on Tris-Bis PAGE under reduced condition. The purity is greater than 95%.

Specification

| | |
|-----------------------------|--|
| Product Description | Human CD40LG (P29965, Met113-Leu261) partial recombinant protein with monomeric hFc tag at N-terminus expressed in HEK293 cells. |
| Sequence | Met113-Leu261 |
| Host | Human |
| Theoretical MW (kDa) | 74.90000000000001 |
| Form | Lyophilized |
| Preparation Method | Mammalian cell (HEK293) expression system |
| Purity | > 95% as determined by Tris-Bis PAGE;> 95% as determined by HPLC |
| Endotoxin Level | < 1 EU per 1 ug of protein (determined by LAL method) |
| Recommend Usage | Biological Activity ELISA SEC-HPLC Tris-Bis PAGE The optimal working dilution should be determined by the end user. |
| Storage Buffer | Lyophilized from filtered solution in PBS, pH 7.4 (5% trehalose). |

Storage Instruction

After reconstitution with deionized water to a final concentration more than 100 ug/ml, store at 4°C for 1 week. For long term storage, store at -80°C for 1 year.
Aliquot to avoid repeated freezing and thawing.

Applications

- Enzyme-linked Immunoabsorbent Assay

- Inhibition Assay

Serial dilutions of Anti-CD40 Antibody were added into Biotinylated Human CD40, His Tag : Human CD40 Ligand (Trimer) , hFc Tag binding reactions. The half maximal inhibitory concentration (IC50) is 2.0ug/ml.

- Functional Study

Gene Info — CD40LG

| | |
|--------------------|--|
| Entrez GeneID | 959 |
| Protein Accession# | P29965 |
| Gene Name | CD40LG |
| Gene Alias | CD154, CD40L, HIGM1, IGM, IMD3, T-BAM, TNFSF5, TRAP, gp39, hCD40L |
| Gene Description | CD40 ligand |
| Omim ID | 300386 308230 |
| Gene Ontology | Hyperlink |
| Gene Summary | The protein encoded by this gene is expressed on the surface of T cells. It regulates B cell function by engaging CD40 on the B cell surface. A defect in this gene results in an inability to undergo immunoglobulin class switch and is associated with hyper-IgM syndrome. [provided by RefSeq] |
| Other Designations | CD40 antigen ligand OTTHUMP00000024130 T-B cell-activating molecule TNF-related activation protein tumor necrosis factor (ligand) superfamily member 5 |

Pathway

- [Allograft rejection](#)
- [Asthma](#)

- [Autoimmune thyroid disease](#)
- [Cell adhesion molecules \(CAMs\)](#)
- [Cytokine-cytokine receptor interaction](#)
- [Primary immunodeficiency](#)
- [Systemic lupus erythematosus](#)
- [T cell receptor signaling pathway](#)

Disease

- [Alzheimer disease](#)
- [Arthritis](#)
- [Asthma](#)
- [Atherosclerosis](#)
- [Bronchiolitis](#)
- [Calcinosis](#)
- [Cardiovascular Diseases](#)
- [Coronary Artery Disease](#)
- [Coronary Stenosis](#)
- [Diabetes Complications](#)
- [Diabetes Mellitus](#)
- [Diabetic Angiopathies](#)
- [Disease Progression](#)
- [Drug Eruptions](#)
- [Edema](#)
- [Genetic Predisposition to Disease](#)
- [Graves Disease](#)
- [Immunologic Deficiency Syndromes](#)

- [Infant](#)
- [Lupus Erythematosus](#)
- [Malaria](#)
- [Metabolic Syndrome X](#)
- [Mucocutaneous Lymph Node Syndrome](#)
- [Neoplasms](#)
- [Obesity](#)
- [Osteoporosis](#)
- [Ovarian Failure](#)
- [Pemphigus](#)
- [Polycystic Ovary Syndrome](#)
- [Puberty](#)
- [Renal Insufficiency](#)
- [Respiratory Syncytial Virus Infections](#)
- [Severe Combined Immunodeficiency](#)
- [Thrombophilia](#)
- [Tobacco Use Disorder](#)
- [Tuberculosis](#)
- [Werner syndrome](#)