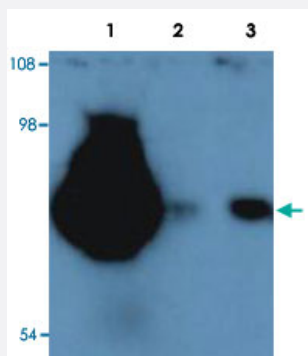


CD44 monoclonal antibody, clone MEM-263 (FITC)

Catalog # MAB9988

Size 100 Reactions

Applications



Western Blot (Cell lysate)

Western blot analysis (non-reducing conditions) of isolated peripheral blood lymphocytes of various species using CD44 monoclonal antibody, clone MEM-263 (FITC) (Cat # MAB9988).

Lane 1: lysate of human PBL.

Lane 2: lysate of canine PBL.

Lane 3: lysate of porcine PBL.

Specification

Product Description	Mouse monoclonal antibody raised against CD44.
Immunogen	COS-7 cells (African Green Monkey)
Host	Mouse
Reactivity	Dog, Human, Monkey, Pig
Specificity	The antibody reacts with extracellular (N-terminal) domain of standard CD44, a 80-95 kDa transmembrane glycoprotein (hyaladherin family) present on the most of cells and tissues (leukocytes, endothelial cells, mesenchymal cells, etc.); it is negative on platelets and hepatocytes.
Form	Liquid
Conjugation	FITC
Isotype	IgG1
Recommend Usage	Flow cytometry (20 ul reagent / 100 ul of whole blood or 10 ⁶ cells) The optimal working dilution should be determined by the end user.
Storage Buffer	In PBS (0.09% sodium azide, 0.2% (w/v) BSA)

Storage Instruction

Store in the dark at 4°C. Avoid prolonged exposure to light. Do not freeze.

Applications

- Western Blot (Cell lysate)

Western blot analysis (non-reducing conditions) of isolated peripheral blood lymphocytes of various species using CD44 monoclonal antibody, clone MEM-263 (FITC) (Cat # MAB9988).

Lane 1: lysate of human PBL.

Lane 2: lysate of canine PBL.

Lane 3: lysate of porcine PBL.

- Flow Cytometry