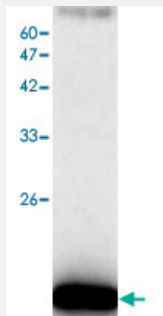


# CFL1 monoclonal antibody, clone 5

Catalog # MAB9908

Size 100 ug

## Applications



### Western Blot (Cell lysate)

Western blot analysis of BGC-823 whole cell lysate with CFL1 monoclonal antibody, clone 5 (Cat # MAB9908) at 1:1000 dilution.

## Specification

**Product Description** Mouse monoclonal antibody raised against full length recombinant CFL1.

**Immunogen** Recombinant protein corresponding to full length human CFL1.

**Host** Mouse

**Reactivity** Human

**Specificity** It can expression in BGC823 whole cell lysate.

**Form** Liquid

**Purification** Affinity purification

**Isotype** IgG2b

**Recommend Usage** Western blot (1:1000)  
The optimal working dilution should be determined by the end user.

**Storage Buffer** In Citrate-Tris-HCl buffer, pH 7.0 (0.02% Proclin 300)

**Storage Instruction** Store at 4°C. For long term storage store at -20°C.  
Aliquot to avoid repeated freezing and thawing.

## Applications

- Western Blot (Cell lysate)

Western blot analysis of BGC-823 whole cell lysate with CFL1 monoclonal antibody, clone 5 (Cat # MAB9908) at 1:1000 dilution.

- Enzyme-linked Immunoabsorbent Assay

## Gene Info — CFL1

Entrez GeneID	<a href="#">1072</a>
GeneBank Accession#	<a href="#">NM_005507.2</a>
Protein Accession#	<a href="#">NP_005498.1</a>
Gene Name	CFL1
Gene Alias	CFL
Gene Description	cofilin 1 (non-muscle)
Omim ID	<a href="#">601442</a>
Gene Ontology	<a href="#">Hyperlink</a>
Gene Summary	Cofilin is a widely distributed intracellular actin-modulating protein that binds and depolymerizes filamentous F-actin and inhibits the polymerization of monomeric G-actin in a pH-dependent manner. It is involved in the translocation of actin-cofilin complex from cytoplasm to nucleus.[supplied by OMIM]
Other Designations	-

## Pathway

- [Axon guidance](#)
- [Fc gamma R-mediated phagocytosis](#)
- [Regulation of actin cytoskeleton](#)

## Disease

- [Spinal Dysraphism](#)