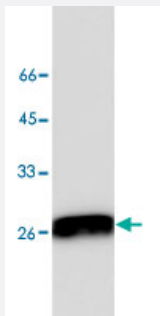


PRDX6 monoclonal antibody, clone 5

Catalog # MAB9907

Size 100 ug

Applications



Western Blot (Cell lysate)

Western blot analysis of HeLa whole cell lysate with PRDX6 monoclonal antibody, clone 5 (Cat # MAB9907) at 1:1000 dilution.

Specification

Product Description Mouse monoclonal antibody raised against full length recombinant PRDX6.

Immunogen Recombinant protein corresponding to full length human PRDX6.

Host Mouse

Reactivity Human

Form Liquid

Purification Affinity purification

Isotype IgG1

Recommend Usage Western blot (1:1000)
The optimal working dilution should be determined by the end user.

Storage Buffer In Citrate-Tris-HCl buffer, pH 7.0 (0.02% Proclin 300)

Storage Instruction Store at 4°C. For long term storage store at -20°C.
Aliquot to avoid repeated freezing and thawing.

Applications

- Western Blot (Cell lysate)

Western blot analysis of HeLa whole cell lysates with PRDX6 monoclonal antibody, clone 5 (Cat # MAB9907) at 1:1000 dilution.

- Enzyme-linked Immunoabsorbent Assay

Gene Info — PRDX6

Entrez GeneID	9588
GeneBank Accession#	NM_004905.2
Protein Accession#	NP_004896.1
Gene Name	PRDX6
Gene Alias	1-Cys, AOP2, KIAA0106, MGC46173, NSGPx, PRX, aiPLA2, p29
Gene Description	peroxiredoxin 6
Omim ID	602316
Gene Ontology	Hyperlink
Gene Summary	The protein encoded by this gene is a member of the thiol-specific antioxidant protein family. This protein is a bifunctional enzyme with two distinct active sites. It is involved in redox regulation of the cell; it can reduce H ₂ O ₂ and short chain organic, fatty acid, and phospholipid hydroperoxides. It may play a role in the regulation of phospholipid turnover as well as in protection against oxidative injury. [provided by RefSeq]
Other Designations	1-Cys peroxiredoxin OTTHUMP00000032693 acidic calcium-independent phospholipase A2 antioxidant protein 2 non-selenium glutathione peroxidase

Pathway

- [Biosynthesis of phenylpropanoids](#)
- [Metabolic pathways](#)
- [Methane metabolism](#)
- [Phenylalanine metabolism](#)
- [Phenylpropanoid biosynthesis](#)

- [Tropane](#)

Disease

- [Coronary Artery Disease](#)
- [Genetic Predisposition to Disease](#)
- [Obesity](#)