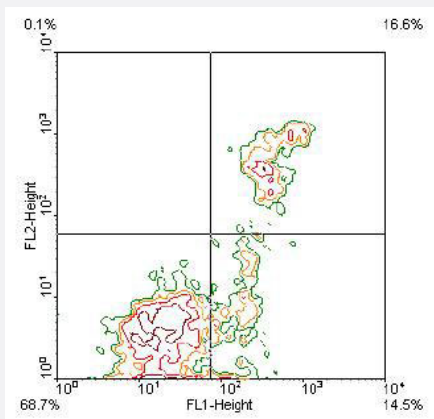


Itgam monoclonal antibody, clone M1/70 (Biotin)

Catalog # MAB9862 Size 500 ug

Applications



Flow Cytometry

BALB/c splenocytes were double stained with Itgam monoclonal antibody, clone M1/70 (FITC)(Cat # MAB9861) and rat anti-mouse Ly-6G-PE. Lymphocytes were gated and analyzed by flow cytometry.

Specification

Product Description	Rat monoclonal antibody raised against Itgam.
Immunogen	Native Itgam from mouse splenic T cells and splenocytes.
Host	Rat
Reactivity	Mouse
Form	Liquid
Conjugation	Biotin
Isotype	IgG2b, kappa
Recommend Usage	Flow Cytometry ($\leq 1 \text{ ug}/10^6$ cells) The optimal working dilution should be determined by the end user.
Storage Buffer	In PBS (0.09% sodium azide)
Storage Instruction	Store at 4°C. Do not freeze.

Note

This product contains sodium azide: a POISONOUS AND HAZARDOUS SUBSTANCE which should be handled by trained staff only.

Applications

- Flow Cytometry

BALB/c splenocytes were double stained with Itgam monoclonal antibody, clone M1/70 (FITC)(Cat # MAB9861) and rat anti-mouse Ly-6G-PE. Lymphocytes were gated and analyzed by flow cytometry.

Gene Info — Itgam

Entrez GeneID	16409
Gene Name	Itgam
Gene Alias	CD11b/CD18, CR3, CR3A, Cd11b, F730045J24Rik, Ly-40, MAC1, Mac-1, Mac-1a
Gene Description	integrin alpha M
Gene Ontology	Hyperlink
Other Designations	CD11B (p170) Mac-1 alpha cell surface glycoprotein MAC-1 alpha subunit complement component receptor 3 alpha complement component receptor 3 alpha-a complement receptor type 3 leukocyte adhesion receptor MO1 macrophage antigen alpha