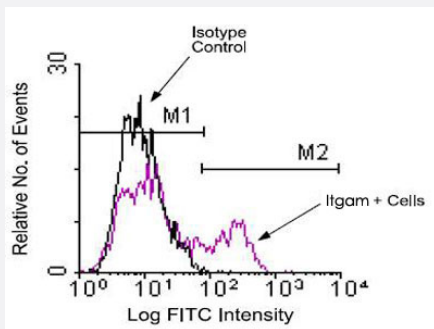


Itgam monoclonal antibody, clone 3A33 (APC/Cy7)

Catalog # MAB9860 Size 100 ug

Applications



Flow Cytometry

BALB/c splenocytes were incubated with Itgam monoclonal antibody, clone 3A33 (Cat # MAB3223) and then stained with goat anti-rat IgG (H+L)-FITC. Large cells were gated and analyzed on a FACScan™ flow cytometer (BDIS, San Jose, CA).

Specification

Product Description	Rat monoclonal antibody raised against Itgam.
Immunogen	Native Itgam from mouse peritoneal macrophages.
Host	Rat
Reactivity	Mouse
Form	Liquid
Conjugation	APC/Cy7
Isotype	IgG2a, kappa
Recommend Usage	Flow Cytometry (≤ 0.3 ug/ 10^6 cells) The optimal working dilution should be determined by the end user.
Storage Buffer	In PBS (0.09% sodium azide)
Storage Instruction	Store at 4°C. Do not freeze.
Note	This product contains sodium azide: a POISONOUS AND HAZARDOUS SUBSTANCE which should be handled by trained staff only.

Applications

- Flow Cytometry

BALB/c splenocytes were incubated with Itgam monoclonal antibody, clone 3A33 (Cat # MAB3223) and then stained with goat anti-rat IgG (H+L)-FITC. Large cells were gated and analyzed on a FACScan™ flow cytometer (BDIS, San Jose, CA).

Gene Info — Itgam

Entrez GeneID	16409
Gene Name	Itgam
Gene Alias	CD11b/CD18, CR3, CR3A, Cd11b, F730045J24Rik, Ly-40, MAC1, Mac-1, Mac-1a
Gene Description	integrin alpha M
Gene Ontology	Hyperlink
Other Designations	CD11B (p170) Mac-1 alpha cell surface glycoprotein MAC-1 alpha subunit complement component receptor 3 alpha complement component receptor 3 alpha-a complement receptor type 3 leukocyte adhesion receptor MO1 macrophage antigen alpha