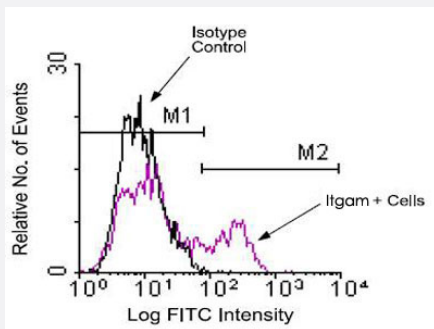


# Itgam monoclonal antibody, clone 3A33 (Cy5)

Catalog # MAB9858      Size 100 ug

## Applications



### Flow Cytometry

BALB/c splenocytes were incubated with Itgam monoclonal antibody, clone 3A33 (Cat # MAB3223) and then stained with goat anti-rat IgG (H+L)-FITC. Large cells were gated and analyzed on a FACScan™ flow cytometer (BDIS, San Jose, CA).

## Specification

<b>Product Description</b>	Rat monoclonal antibody raised against Itgam.
<b>Immunogen</b>	Native Itgam from mouse peritoneal macrophages.
<b>Host</b>	Rat
<b>Reactivity</b>	Mouse
<b>Form</b>	Liquid
<b>Conjugation</b>	Cy5
<b>Isotype</b>	IgG2a, kappa
<b>Recommend Usage</b>	Flow Cytometry ( $\leq 0.3 \text{ ug}/10^6 \text{ cells}$ ) The optimal working dilution should be determined by the end user.
<b>Storage Buffer</b>	In PBS (0.09% sodium azide)
<b>Storage Instruction</b>	Store at 4°C. Do not freeze.
<b>Note</b>	This product contains sodium azide: a POISONOUS AND HAZARDOUS SUBSTANCE which should be handled by trained staff only.

## Applications

- Flow Cytometry

BALB/c splenocytes were incubated with Itgam monoclonal antibody, clone 3A33 (Cat # MAB3223) and then stained with goat anti-rat IgG (H+L)-FITC. Large cells were gated and analyzed on a FACScan™ flow cytometer (BDIS, San Jose, CA).

## Gene Info — Itgam

Entrez GeneID	<a href="#">16409</a>
Gene Name	Itgam
Gene Alias	CD11b/CD18, CR3, CR3A, Cd11b, F730045J24Rik, Ly-40, MAC1, Mac-1, Mac-1a
Gene Description	integrin alpha M
Gene Ontology	<a href="#">Hyperlink</a>
Other Designations	CD11B (p170) Mac-1 alpha cell surface glycoprotein MAC-1 alpha subunit complement component receptor 3 alpha complement component receptor 3 alpha-a complement receptor type 3 leukocyte adhesion receptor MO1 macrophage antigen alpha