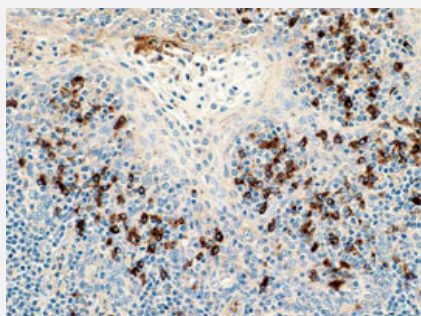


Human Lambda light chain monoclonal antibody, clone K22-Y

Catalog # MAB9777

Size 100 uL

Applications



Immunohistochemistry (Formalin/PFA-fixed paraffin-embedded sections)

Formalin-fixed and paraffin-embedded human tonsil tissue (4 μ m) stained with Human Lambda light chain monoclonal antibody, clone K22-Y (Cat # MAB9777).

Kindly performed and provided by Katarina Poliakova, MD and L'ubomir Straka, MD, Ph. D. from Clinical Pathology Presov, Ltd., Presov, Slovak republic.

Specification

Product Description	Rabbit monoclonal antibody raised against synthetic peptide of Human Lambda light chain.
Immunogen	A synthetic peptide corresponding to N-terminus of human Human Lambda light chain.
Host	Rabbit
Reactivity	Human, Mouse
Form	Liquid
Recommend Usage	Immunohistochemistry (Formalin/PFA-fixed paraffin-embedded sections) (1:100-1:1500) The optimal working dilution should be determined by the end user.
Storage Buffer	In 20 mM Tris-HCl, pH 8.0 (20 mg/mL BSA, 0.05% sodium azide)
Storage Instruction	Store at 4°C.
Note	This product contains sodium azide: a POISONOUS AND HAZARDOUS SUBSTANCE which should be handled by trained staff only.

Applications

- Immunohistochemistry (Formalin/PFA-fixed paraffin-embedded sections)

Formalin-fixed and paraffin-embedded human tonsil tissue (4 μ m) stained with Human Lambda light chain monoclonal antibody, clone K22-Y (Cat # MAB9777).

Kindly performed and provided by Katarina Poliakova, MD and L'ubomir Straka, MD, Ph. D. from Clinical Pathology Presov, Ltd., Presov, Slovak republic.

- Immunohistochemistry (Frozen sections)