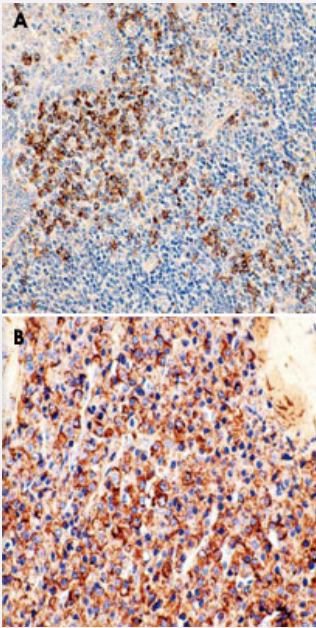


Human Kappa light chain monoclonal antibody, clone H16-E

Catalog # MAB9776 Size 100 uL

Applications



Immunohistochemistry (Formalin/PFA-fixed paraffin-embedded sections)

Formalin-fixed and paraffin-embedded human tonsil tissue (A; 4 μ m) and bone plasmocytoma (B; 4 μ m) stained with Human Kappa light chain monoclonal antibody, clone H16-E (Cat # MAB9776).

Kindly performed and provided by Katarina Poliakova, MD and L'ubomir Straka, MD, Ph. D. from Clinical Pathology Presov, Ltd., Presov, Slovak republic.

Specification

Product Description	Rabbit monoclonal antibody raised against synthetic peptide of Human Kappa light chain.
Immunogen	A synthetic peptide corresponding to C-terminus of human Human Kappa light chain.
Host	Rabbit
Reactivity	Human, Mouse
Form	Liquid
Recommend Usage	Immunohistochemistry (Formalin/PFA-fixed paraffin-embedded sections) (1:100-1:500) The optimal working dilution should be determined by the end user.
Storage Buffer	In 20 mM Tris-HCl, pH 8.0 (20 mg/mL BSA, 0.05% sodium azide)

Storage Instruction

Store at 4°C.

Note

This product contains sodium azide: a POISONOUS AND HAZARDOUS SUBSTANCE which should be handled by trained staff only.

Applications

- Immunohistochemistry (Formalin/PFA-fixed paraffin-embedded sections)

Formalin-fixed and paraffin-embedded human tonsil tissue (A; 4 µm) and bone plasmacytoma (B; 4 µm) stained with Human Kappa light chain monoclonal antibody, clone H16-E (Cat # MAB9776).

Kindly performed and provided by Katarina Poliakova, MD and L'ubomir Straka, MD, Ph. D. from Clinical Pathology Presov, Ltd., Presov, Slovak republic.

- Immunohistochemistry (Frozen sections)

Publication Reference

- [Utility of 99 m Tc-Pyrophosphate Scintigraphy in Diagnosing Transthyretin Cardiac Amyloidosis in Real-World Practice.](#)

Yoshitomo Tsutsui, Toru Kubota, Seiya Kato, Masatsugu Nozoe, Nobuhiro Suematsu, Masanori Okabe, Yusuke Yamamoto, Hiroyuki Tsutsui.

Circulation Reports 2019 Jun; 1(7):277.

Application: IHC-P, Human, Human endomyocardial biopsy