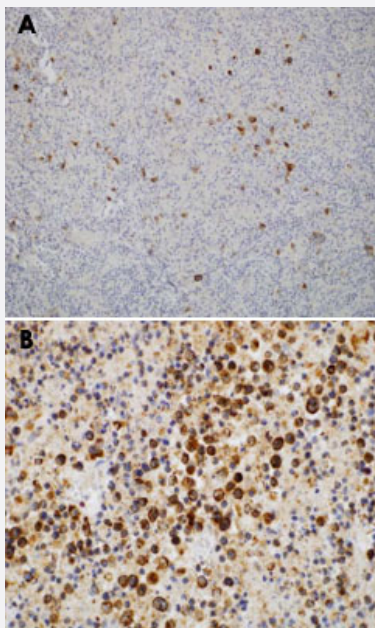


# LMP-1 monoclonal antibody, clone S20-D

Catalog # MAB9773      Size 100 uL

## Applications



### Immunohistochemistry (Formalin/PFA-fixed paraffin-embedded sections)

Formalin-fixed and paraffin-embedded human lymph node tissue (4 µm) corresponding to Hodgkin's lymphoma (A) and EBV infectious mononucleosis (B) stained with LMP-1 monoclonal antibody, clone S20-D (Cat # MAB9773). Kindly performed and provided by Prof. Dr. Med. Lukas Plank, Ph. D. from Department of Pathology and National Consultation Center for Haematopathology of Comenius University, Jessenius Medical Faculty and Faculty Hospital Martin, Slovak Republic.

## Specification

<b>Product Description</b>	Rabbit monoclonal antibody raised against synthetic peptide of LMP-1.
<b>Immunogen</b>	A synthetic peptide corresponding to C-terminus of Epstein-Barr virus LMP-1.
<b>Host</b>	Rabbit
<b>Reactivity</b>	Human
<b>Form</b>	Liquid
<b>Recommend Usage</b>	Immunohistochemistry (Formalin/PFA-fixed paraffin-embedded sections) (1:100-1:200) The optimal working dilution should be determined by the end user.
<b>Storage Buffer</b>	In 20 mM Tris-HCl, pH 8.0 (20 mg/mL BSA, 0.05% sodium azide)

**Storage Instruction**

Store at 4°C.

**Note**

This product contains sodium azide: a POISONOUS AND HAZARDOUS SUBSTANCE which should be handled by trained staff only.

## Applications

- Immunohistochemistry (Formalin/PFA-fixed paraffin-embedded sections)

Formalin-fixed and paraffin-embedded human lymph node tissue (4 µm) corresponding to Hodgkin's lymphoma (A) and EBV infectious mononucleosis (B) stained with LMP-1 monoclonal antibody, clone S20-D (Cat # MAB9773).

Kindly performed and provided by Prof. Dr. Med. Lukas Plank, Ph. D. from Department of Pathology and National Consultation Center for Haematopathology of Comenius University, Jessenius Medical Faculty and Faculty Hospital Martin, Slovak Republic.

- Immunohistochemistry (Frozen sections)

## Gene Info — LMP-1

**Entrez GeneID**[3783750](#)**Protein Accession#**[P03230](#)**Gene Name**

LMP-1

**Gene Alias**

-

**Gene Description**

LMP-1

**Gene Ontology**[Hyperlink](#)**Other Designations**

-