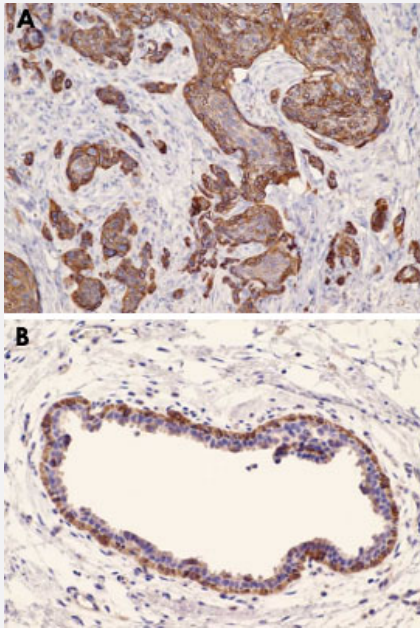


# KRT17 monoclonal antibody, clone V21-R

Catalog # MAB9768      Size 100 uL

## Applications



### Immunohistochemistry (Formalin/PFA-fixed paraffin-embedded sections)

Formalin-fixed and paraffin-embedded human squamous skin carcinoma (A, 4 μm), and human breast tissue (B, 4 μm), stained with KRT17 monoclonal antibody, clone V21-R (Cat # MAB9768) shows strong positive cytoplasmic immunostaining of tumor cells (A), and strong positive cytoplasmic immunostaining of myoepithelial cells in hyperplastic duct (B). Kindly performed and provided by Katarina Poliakov, MD and L'ubomir Straka, MD, Ph. D. from Clinical Pathology Presov, Ltd., Presov, Slovak republic.

## Specification

<b>Product Description</b>	Rabbit monoclonal antibody raised against synthetic peptide of KRT17.
<b>Immunogen</b>	A synthetic peptide corresponding to C-terminus of human KRT17.
<b>Host</b>	Rabbit
<b>Reactivity</b>	Human, Mouse
<b>Form</b>	Liquid
<b>Recommend Usage</b>	Immunohistochemistry (Formalin/PFA-fixed paraffin-embedded sections) (1:100-1:200) The optimal working dilution should be determined by the end user.
<b>Storage Buffer</b>	In 20 mM Tris-HCl, pH 8.0 (20 mg/mL BSA, 0.05% sodium azide)

**Storage Instruction**

Store at 4°C.

**Note**

This product contains sodium azide: a POISONOUS AND HAZARDOUS SUBSTANCE which should be handled by trained staff only.

## Applications

- Immunohistochemistry (Formalin/PFA-fixed paraffin-embedded sections)

Formalin-fixed and paraffin-embedded human squamous skin carcinoma (A, 4 µm), and human breast tissue (B, 4 µm), stained with KRT17 monoclonal antibody, clone V21-R (Cat # MAB9768) shows strong positive cytoplasmic immunostaining of tumor cells (A), and strong positive cytoplasmic immunostaining of myoepithelial cells in hyperplastic duct (B).

Kindly performed and provided by Katarina Poliakova, MD and L'ubomir Straka, MD, Ph. D. from Clinical Pathology Presov, Ltd., Presov, Slovak republic.

- Immunohistochemistry (Frozen sections)

## Gene Info — KRT17

**Entrez GeneID**[3872](#)**Protein Accession#**[Q04695](#)**Gene Name**

KRT17

**Gene Alias**

K17, PC, PC2, PCHC1

**Gene Description**

keratin 17

**Omim ID**[148069](#) [167210](#) [184500](#)**Gene Ontology**[Hyperlink](#)**Gene Summary**

This gene encodes the type I intermediate filament chain keratin 17, expressed in nail bed, hair follicle, sebaceous glands, and other epidermal appendages. Mutations in this gene lead to Jackson-Lawler type pachyonychia congenita and steatocystoma multiplex. [provided by RefSeq]

**Other Designations**

cytokeratin-17