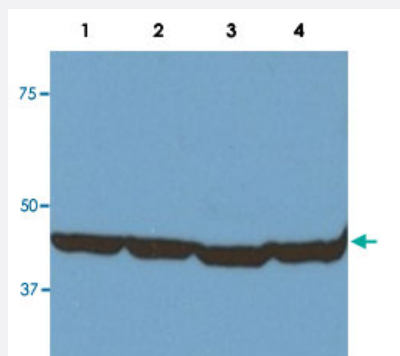


# ACTB monoclonal antibody, clone BA3R

Catalog # MAB9743      Size 100 ug

## Applications



### Western Blot (Tissue lysate)

Western blot analysis of 20 ug/lane tissue lysate from human (1), mouse (2), rat (3) and rabbit (4). Blotting with ACTB monoclonal antibody, clone BA3R (Cat # MAB9743) at 1:1000 dilution.

## Specification

|                            |  |
|----------------------------|--|
| <b>Product Description</b> | Mouse monoclonal antibody raised against synthetic peptide of ACTB.  |
| <b>Immunogen</b>           | A synthetic peptide (conjugated with KLH) corresponding to N-terminus of ACTB.   |
| <b>Host</b>                | Mouse  |
| <b>Reactivity</b>          | Chicken, Human, Mouse, Rabbit, Rat   |
| <b>Specificity</b>         | Recognizes native and denatured forms of beta-Actin (~42 KDa).   |
| <b>Form</b>                | Liquid   |
| <b>Purification</b>        | Protein A purification   |
| <b>Concentration</b>       | 1 mg/mL  |
| <b>Isotype</b>             | IgG2b  |
| <b>Recommend Usage</b>     | Western Blot (1:1000-1:10000)<br>Immunohistochemistry (1:500-1:2000)<br>The optimal working dilution should be determined by the end user. |

|                            |  |
|----------------------------|--|
| <b>Storage Buffer</b>      | In 10 mM PBS, pH 7.2 (0.05% sodium azide)  |
| <b>Storage Instruction</b> | Store at -20°C.<br>Aliquot to avoid repeated freezing and thawing.   |
| <b>Note</b>                | This product contains sodium azide: a POISONOUS AND HAZARDOUS SUBSTANCE which should be handled by trained staff only. |

## Applications

- Western Blot (Tissue lysate)

Western blot analysis of 20 ug/lane tissue lysate from human (1), mouse (2), rat (3) and rabbit (4). Blotting with ACTB monoclonal antibody, clone BA3R (Cat # MAB9743) at 1:1000 dilution.

- Immunohistochemistry

- Enzyme-linked Immunoabsorbent Assay

- Dot Blot