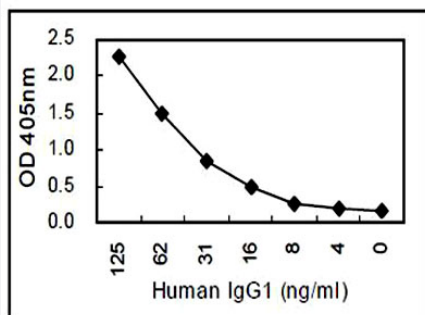


IgG1 monoclonal antibody, clone KT46

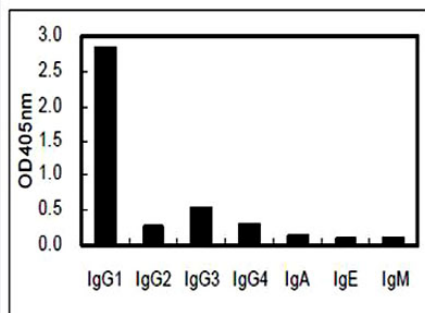
Catalog # MAB9724 Size 100 ug

Applications



Sandwich ELISA

Sandwich ELISA using IgG1 monoclonal antibody, clone KT46 (Cat # MAB9724) coated plate and HRP conjugated IgG monoclonal antibody, clone KT47 (Cat # MAB9725).



Specification

| | |
|---------------------|--|
| Product Description | Rat monoclonal antibody raised against recombinant human IgG1 Fc. |
| Immunogen | Recombinant fusion protein corresponding to human IgG1 Fc. |
| Host | Rat |
| Reactivity | Human |
| Specificity | This antibody is specific to human IgG1. Not cross-react with human IgG2, IgG3 and IgG4, IgA, IgE and IgM. |
| Form | Liquid |

| | |
|--------------------------------|---|
| Purification | Protein G purification |
| Concentration | 1 mg/mL |
| Isotype | IgG2a |
| Quality Control Testing | Cross-reactivity test |
| Recommend Usage | ELISA (1 ug/mL) Sandwich ELISA (5 ug/mL for coating) The optimal working dilution should be determined by the end user. |
| Storage Buffer | In PBS (0.09% sodium azide) |
| Storage Instruction | Store at 4°C. For long term storage store at -20°C or -80°C. Aliquot to avoid repeated freezing and thawing. |
| Note | This product contains sodium azide: a POISONOUS AND HAZARDOUS SUBSTANCE which should be handled by trained staff only. |

Applications

- Enzyme-linked Immunoabsorbent Assay
- Sandwich ELISA

Sandwich ELISA using IgG1 monoclonal antibody, clone KT46 (Cat # MAB9724) coated plate and HRP conjugated IgG monoclonal antibody, clone KT47 (Cat # MAB9725).