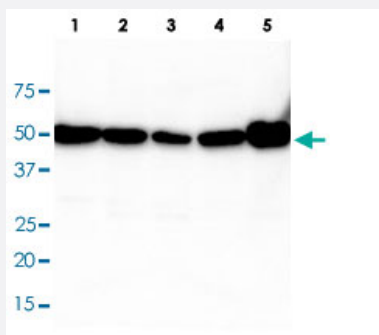


# TUBB monoclonal antibody, clone AT5B2

Catalog # MAB9723

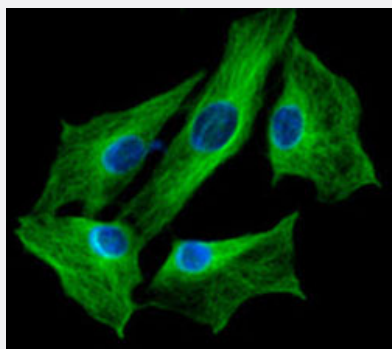
Size 100 uL

## Applications



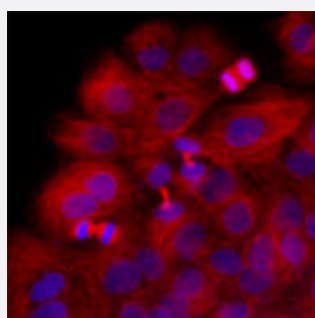
### Western Blot

Western blot analysis of Lane 1: Jurkat cell lysate, Lane 2: A549 cell lysate, Lane 3: A431 cell lysate, Lane 4: HepG2 cell lysate, Lane 5: mouse brain tissue extract.



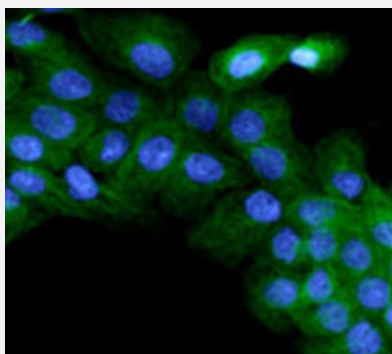
### Immunofluorescence

Immunofluorescence of Balb/3T3 cells stained with DAPI (Blue) for nucleus staining and monoclonal anti-human beta-Tubulin antibody (1:200) with Alexa Fluor 488 (Green).



### Immunofluorescence

Immunofluorescence of HaCat cells stained with Hoechst 3342 (Blue) for nucleus staining and with TUBB monoclonal antibody, clone AT5B2 (Cat # MAB9723) at 1 : 1000 dilution with Texas Red (Red).



## Immunofluorescence

Immunofluorescence of A431 cells stained with DAPI (Blue) for nucleus staining and monoclonal anti-human beta-Tubulin antibody (1:500) with Alexa Fluor 488 (Green).

## Specification

**Product Description** Mouse monoclonal antibody raised against partial recombinant TUBB.

**Immunogen** Recombinant protein corresponding to amino acids 1-445 of human TUBB.

**Host** Mouse

**Reactivity** Human, Mouse

**Form** Liquid

**Purification** Protein G purification

**Concentration** 1 mg/mL

**Isotype** IgG2b, kappa

**Recommend Usage** ELISA  
Immunocytochemistry  
Immunofluorescence  
Western Blot  
The optimal working dilution should be determined by the end user.

**Storage Buffer** In PBS, pH 7.4 (10% glycerol, 0.02% sodium azide).

**Storage Instruction** Store at 4°C. For long term storage store at -20°C.  
Aliquot to avoid repeated freezing and thawing.

**Note** This product contains sodium azide: a POISONOUS AND HAZARDOUS SUBSTANCE which should be handled by trained staff only.

## Applications

- Western Blot

Western blot analysis of Lane 1: Jurkat cell lysate, Lane 2: A549 cell lysate, Lane 3: A431 cell lysate, Lane 4: HepG2 cell lysate, Lane 5: mouse brain tissue extract.

- Immunocytochemistry

- Immunofluorescence

Immunofluorescence of Balb/3T3 cells stained with DAPI (Blue) for nucleus staining and monoclonal anti-human beta-Tubulin antibody (1:200) with Alexa Fluor 488 (Green).

- Immunofluorescence

Immunofluorescence of HaCat cells stained with Hoechst 3342 (Blue) for nucleus staining and with TUBB monoclonal antibody, clone AT5B2 (Cat # MAB9723) at 1 : 1000 dilution with Texas Red (Red).

- Immunofluorescence

Immunofluorescence of A431 cells stained with DAPI (Blue) for nucleus staining and monoclonal anti-human beta-Tubulin antibody (1:500) with Alexa Fluor 488 (Green).

- Enzyme-linked Immunoabsorbent Assay

## Gene Info — TUBB

Entrez GeneID [203068](#)

Protein Accession# [NP\\_821080](#)

Gene Name TUBB

Gene Alias M40, MGC117247, MGC16435, OK/SW-cl.56, TUBB1, TUBB5

Gene Description tubulin, beta

Omim ID [191130](#)

Gene Ontology [Hyperlink](#)

Gene Summary O

Other Designations OTTHUMP00000029069|beta 5-tubulin|beta 1b tubulin|beta-4 tubulin|tubulin beta polypeptide|tubulin beta-1 chain|tubulin beta-5 chain|tubulin, beta polypeptide

## Pathway

- [Gap junction](#)
- [Pathogenic Escherichia coli infection - EHEC](#)

## Disease

- [Breast cancer](#)
- [Breast Neoplasms](#)
- [Cerebral Hemorrhage](#)
- [Genetic Predisposition to Disease](#)
- [Lupus Erythematosus](#)
- [Narcolepsy](#)
- [Subarachnoid Hemorrhage](#)
- [Thrombosis](#)