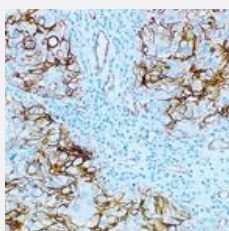


MCAM monoclonal antibody, clone N1238

Catalog # MAB9641

Size

Applications



Immunohistochemistry (Formalin/PFA-fixed paraffin-embedded sections)

Immunohistochemical staining for paraffin-embedded human malignant melanoma section using MCAM monoclonal antibody, clone N1238 (Cat # MAB9641). Note membrane staining of metastatic melanocytes and endothelial cells.

Specification

Product Description	Mouse monoclonal antibody raised against partial recombinant MCAM.
Immunogen	Recombinant fusion protein corresponding to external region of human MCAM.
Host	Mouse
Reactivity	Human
Form	Liquid
Isotype	IgG1
Recommend Usage	Immunohistochemistry (Heat Induced Epitope Retrieval (HIER)) (1:50 for 30 minutes at 25°C.) (The recommended fixative is 10% neutral-buffered formalin for paraffin-embedded tissue sections.) The optimal working dilution should be determined by the end user.
Storage Buffer	In tissue culture supernatant (0.09% sodium azide).
Storage Instruction	Store at 4°C. Do not freeze. Return to 2-8°C immediately after use. Do not use after expiration date indicated on the vial label.
Note	This product contains sodium azide: a POISONOUS AND HAZARDOUS SUBSTANCE which should be handled by trained staff only.

Applications

- Immunohistochemistry (Formalin/PFA-fixed paraffin-embedded sections)

Immunohistochemical staining for paraffin-embedded human malignant melanoma section using MCAM monoclonal antibody, clone N1238 (Cat # MAB9641). Note membrane staining of metastatic melanocytes and endothelial cells.

Gene Info — MCAM

Entrez GeneID	4162
Gene Name	MCAM
Gene Alias	CD146, MUC18
Gene Description	melanoma cell adhesion molecule
Omim ID	155735
Gene Ontology	Hyperlink
Other Designations	Gicerin melanoma adhesion molecule